

GOTLAND RESORT

Catalogue



An aerial photograph of a beach and ocean. The left side shows a wide, sandy beach with two small figures of people walking. The right side shows the ocean with white, foamy waves breaking onto the shore. The word 'Contents' is written in a large, white, cursive font in the upper left area.

Contents

GENERAL INFO

3

LUXURY VILLA 180

12

PREMIUM VILLA 120

15

MODERN VILLA 60

27

Nature

The landscape on Gotland is characterised by limestone, sea stacks (vertical rock formations shaped by the sea), small scale farms and open land. The island has a total of 800 km of coastline, which is dotted with fantastic sand and stone beaches. In general, the landscape is somewhat more rugged in the north and more wooded in the south.

Climate

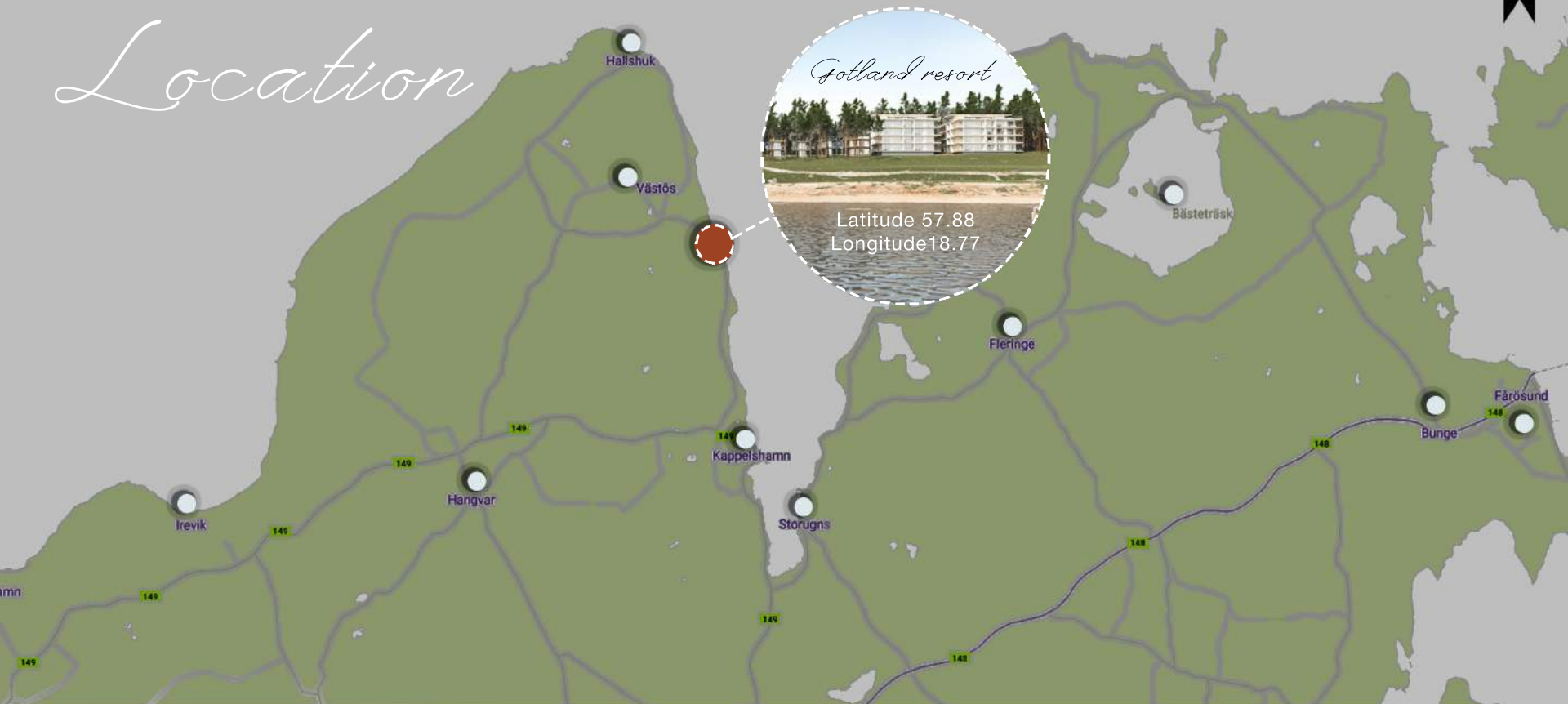
Gotland is one of the sunniest places in Sweden. Visby normally tops the Swedish Sun League, which measures the number of sunshine hours at various places around the country. During the winter, temperatures fall to a couple of degrees below zero while summer temperatures normally hover just above 20 degrees.



THE SUNNIEST PLACE IN
SWEDEN

© JVMB 2019 All rights reserved

Location



1687



© JVMB 2019 All rights reserved



3d master plan

CONVENIENT LOCATION

© JVMB 2019 All rights reserved



General view

GENERAL VIEW

© JVMB 2019 All rights reserved

Variations

Roof terrace as standard on all the objects as well as big common areas and premium materials provides a premium living or vacation home.

Interior customisation may be approved after buyers specifications

Premium 120 SQ M



Luxury 180 SQ M



Modern 60 SQ M



LIVING OR VACATION!

© JVMB 2019 All rights reserved



GENERAL VIEW

© JVMB 2019 All rights reserved



GENERAL VIEW

© JVMB 2019 All rights reserved



LUXURY SERIES

© JVMB 2019 All rights reserved

Luxury
villa



LUXURY SERIES

© JVMB 2019 All rights reserved

Luxury
villa



LUXURY SERIES

© JVMB 2019 All rights reserved

Design Modification
Possibilities on Request



PREMIUM SERIES

© JVMB 2019 All rights reserved

Premium
villa

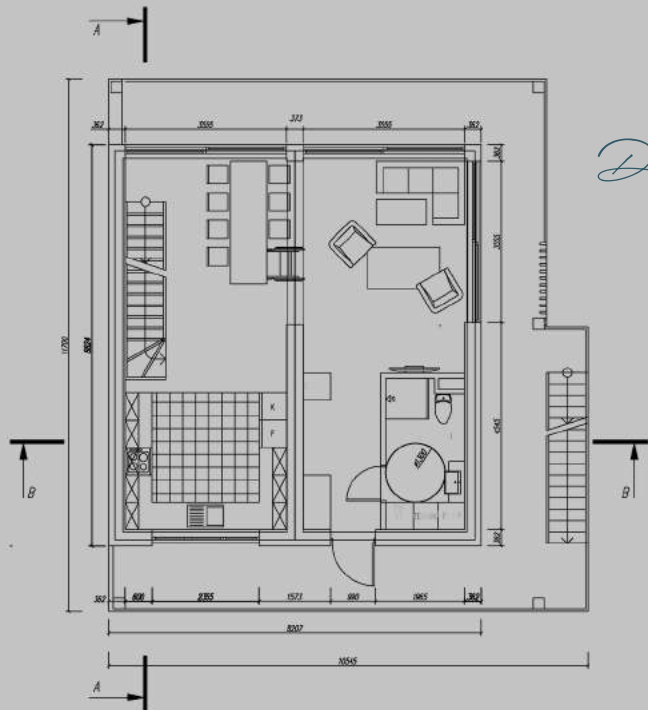


PREMIUM SERIES

© JVMB 2019 All rights reserved

Premium
villa

1ST FLOOR



Details

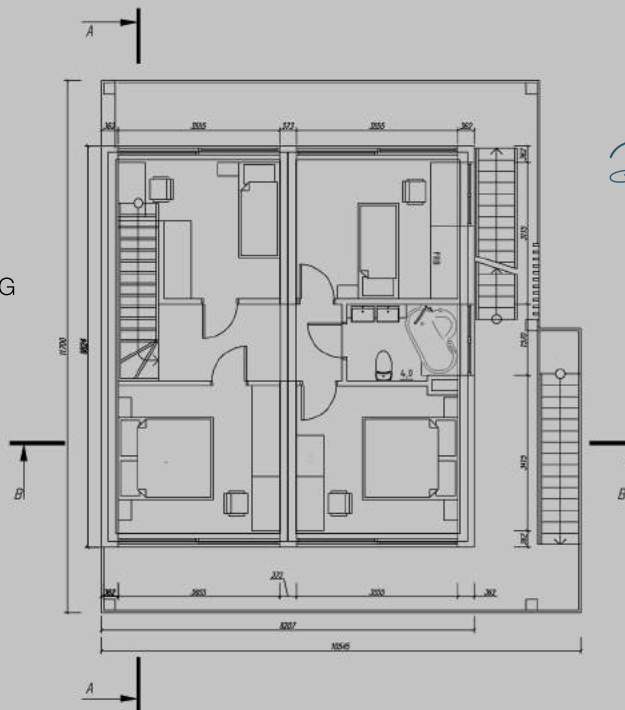
30 SQ M -
KITCHEN-DINING

16 SQ M -
LIVING-ROOM

7 SQ M -
BATHROOM

7 SQ M -
ENTRANCE

2ND FLOOR



Details

12 SQ M -
BEDROOM (2X)

12 SQ M -
CHILDRENS ROOM
(2X)

4 SQ M -
BATHROOM

12 SQ M -
HALL

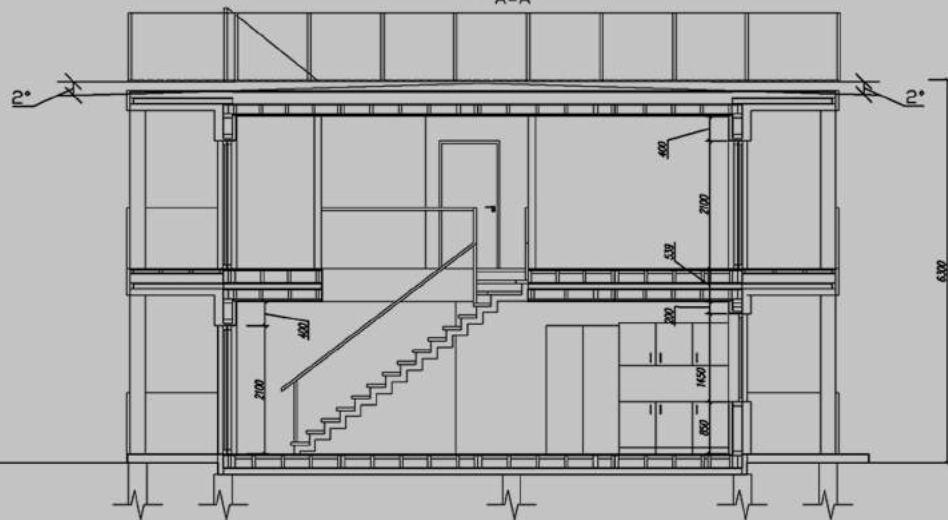
PREMIUM SERIES

© JVMB 2019 All rights reserved

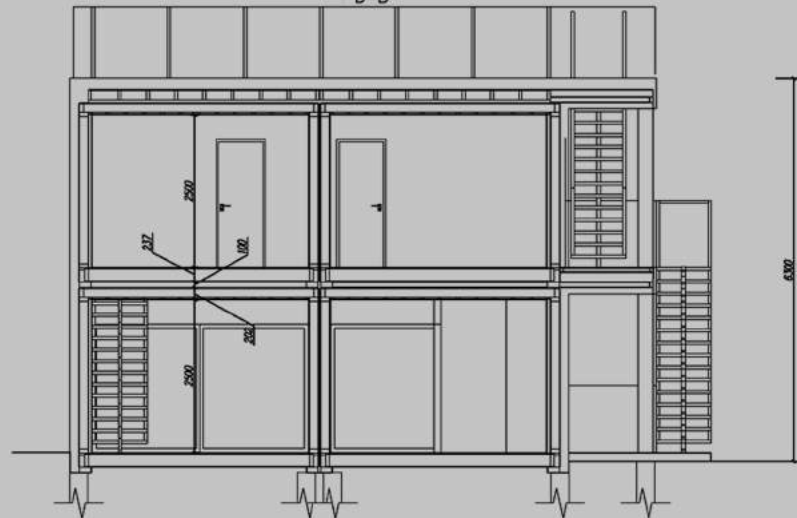
Premium
villa

SECTIONS

A-A



B-B



PREMIUM SERIES

© JVMB 2019 All rights reserved

Premium
 villa



PREMIUM SERIES

© JVMB 2019 All rights reserved

Premium
villa

Premium
villa

20





PREMIUM SERIES

© JVMB 2019 All rights reserved

Premium
villa

3d plan

2 floors
 1 living room
 1 kitchen
 4 bedrooms
 2 bathrooms
 balconies
 roof terrace
 jacuzzi

 pool 4x3m

120 sq m (60 on each floor)



PREMIUM SERIES

© JVMB 2019 All rights reserved

Premium
 villa



PREMIUM SERIES

© JVMB 2019 All rights reserved

Premium villa
interior



PREMIUM SERIES

© JVMB 2019 All rights reserved

Premium villa
interior



25



PREMIUM SERIES

© JVMB 2019 All rights reserved

Premium villa
interior



PREMIUM SERIES

© JVMB 2019 All rights reserved

Premium villa
interior



STANDARD SERIES

© JVMB 2019 All rights reserved

Modern
villa

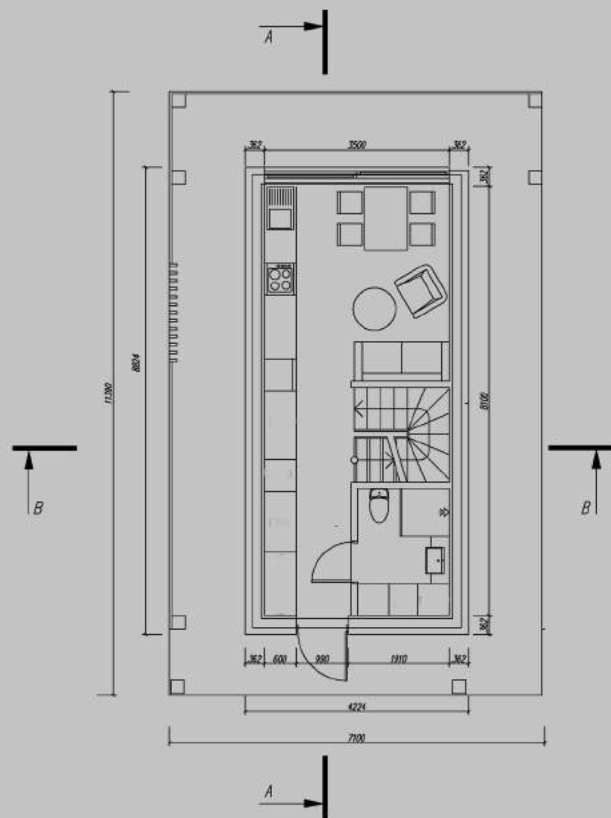


STANDARD SERIES

© JVMB 2019 All rights reserved

Modern
villa

1ST FLOOR

*Details*

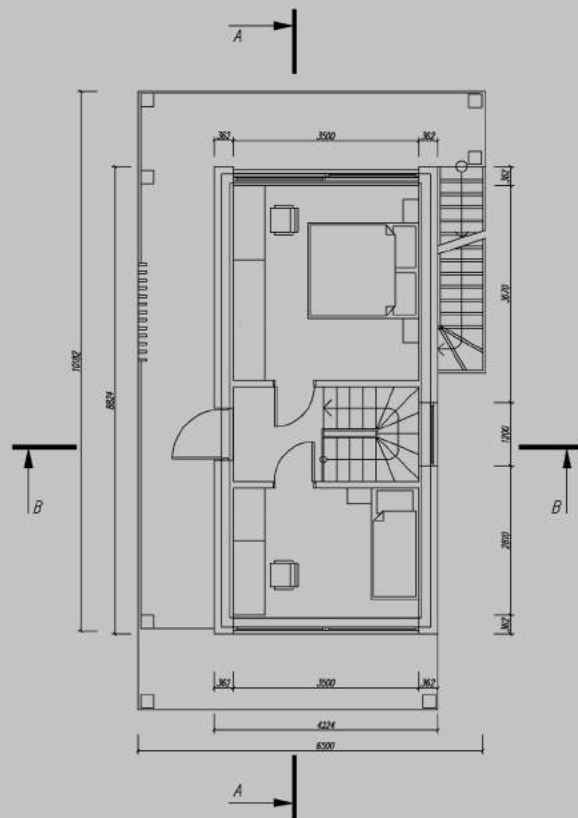
14 SQ M -
KITCHEN-LIVING

6 SQ M -
BATHROOM

4 SQ M -
ENTRANCE

6 SQ M -
ENTRANCE

2ND FLOOR

*Details*

14 SQ M -
BEDROOM

10 SQ M -
CHILDRENS ROOM

6 SQ M -
HALL

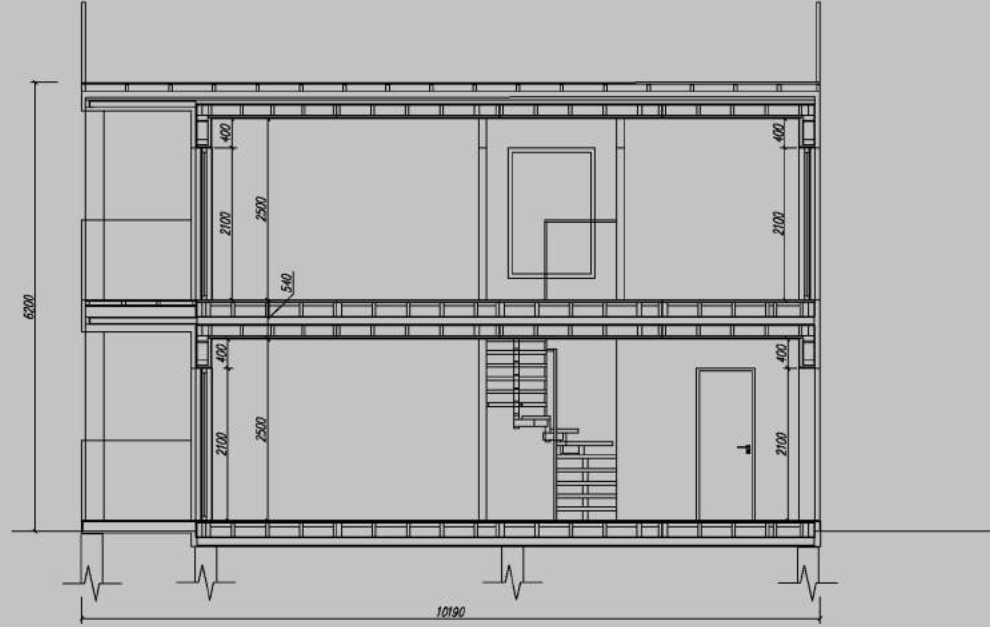
STANDARD SERIES

© JVMB 2019 All rights reserved

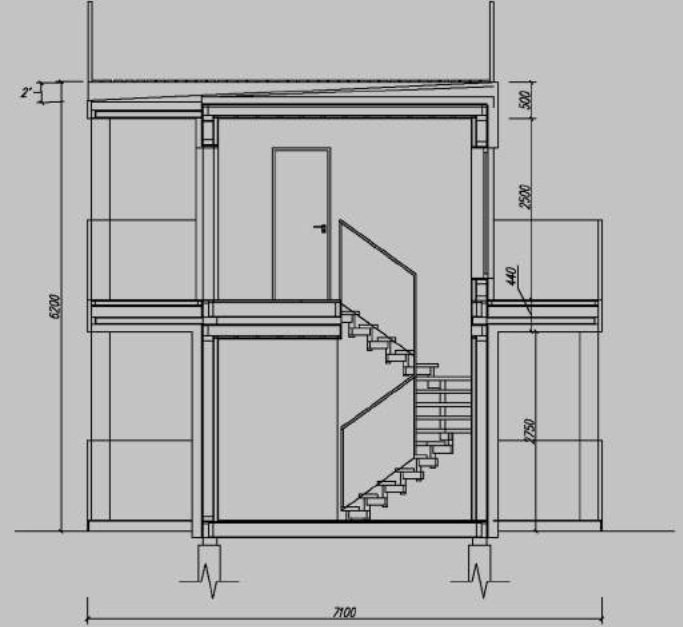
Modern
villa

SECTIONS

A-A



B-B



STANDARD SERIES

© JVMB 2019 All rights reserved

Modern
villa



STANDARD SERIES

© JVMB 2018 All rights reserved

Modern
villa

Modern
villa





STANDARD SERIES

© JVMB 2019 All rights reserved

Modern
villa

3d plan

2 floors
1 kitchen - living room
2 bedrooms
1 bathroom
balconies
roof terrace
jacuzzi

pool 2,5X2m

60 sq m (30 on each floor)





STANDARD SERIES

© JVMB 2019 All rights reserved

Modern
interior



STANDARD SERIES

© JVMB 2019 All rights reserved

Modern
interior



STANDARD SERIES

© JVMB 2019 All rights reserved

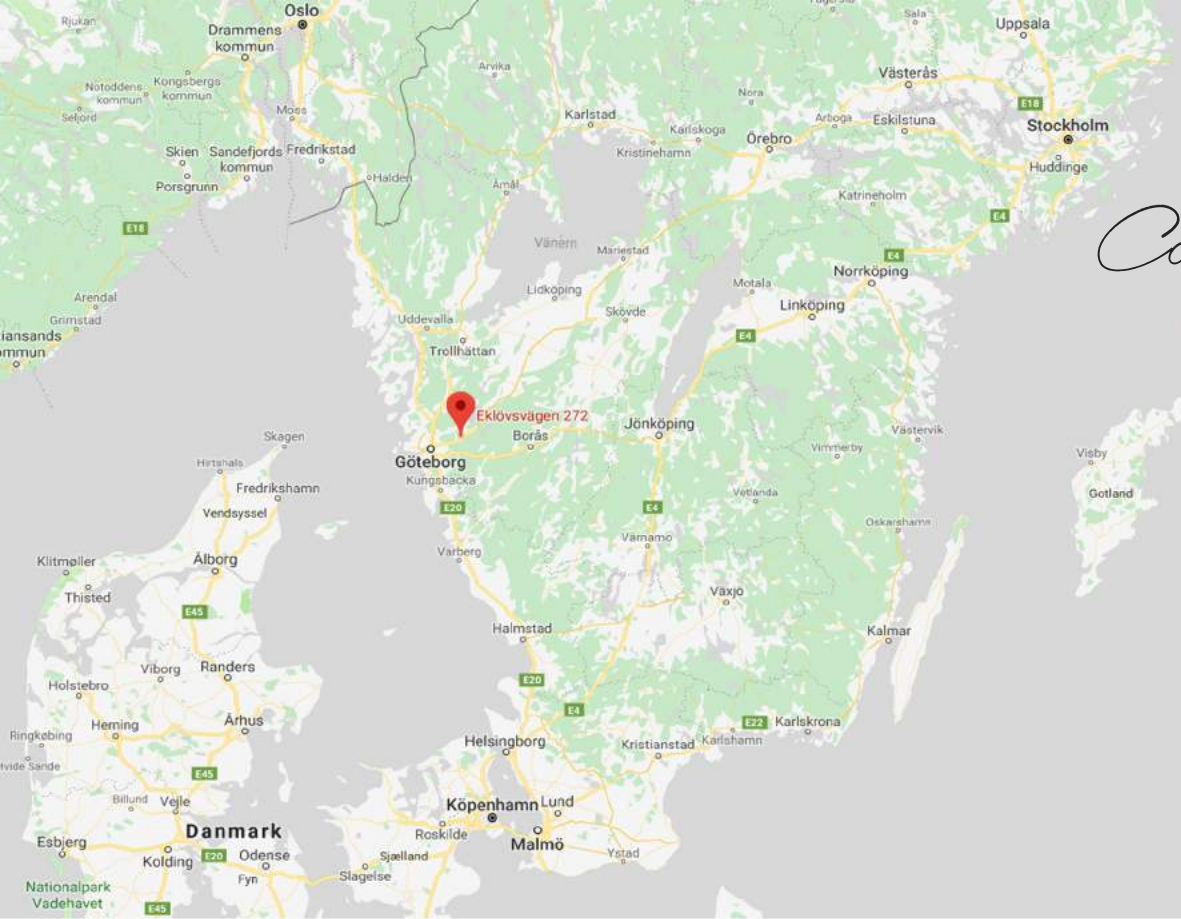
Modern
interior



STANDARD SERIES

© JVMB 2019 All rights reserved

Modern
interior



Contact us for more details!



<https://www.modular.house/>



Email: sales@modular.house



Address: Eklövsvägen
272 443 50 Lerum