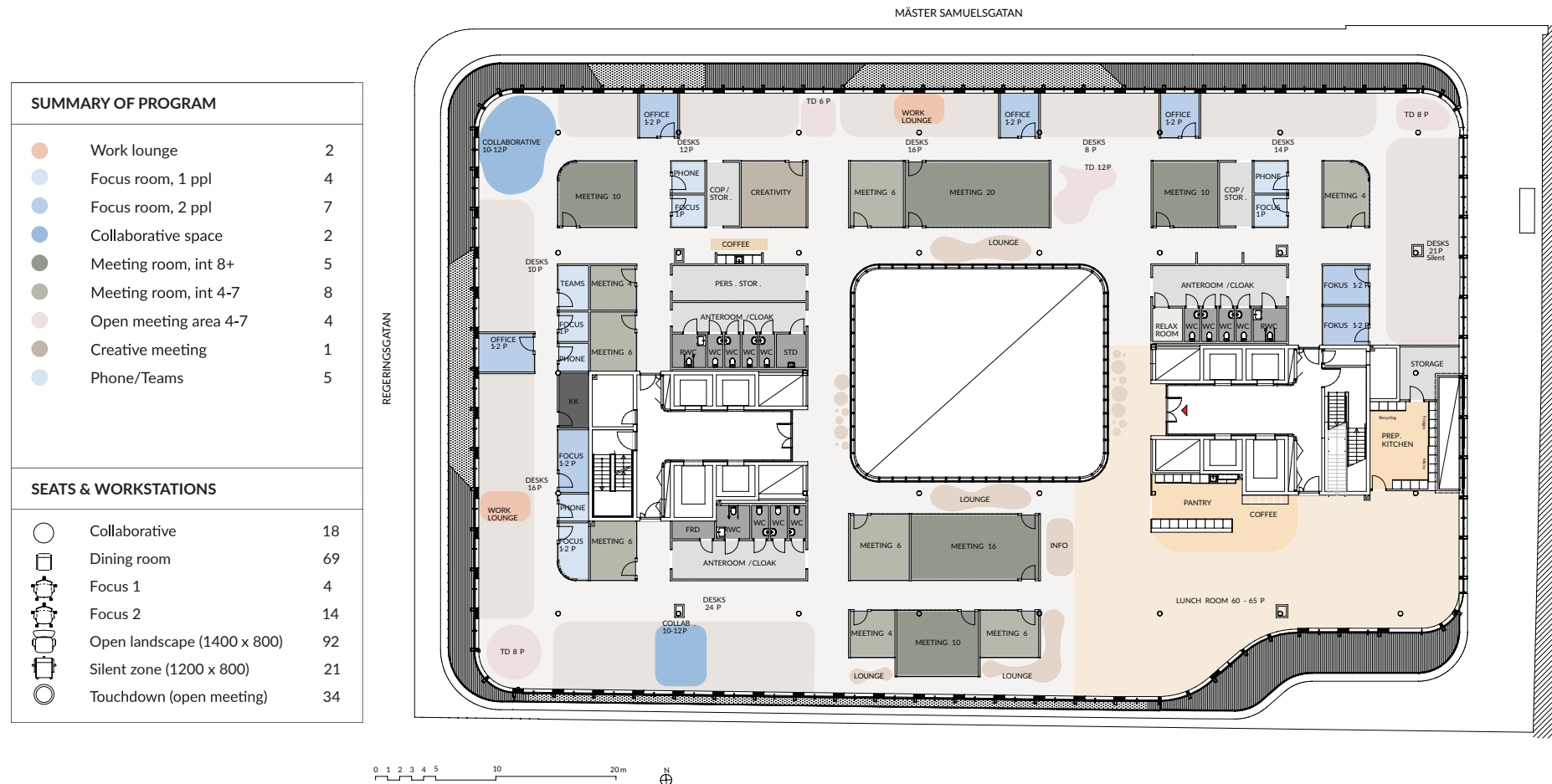
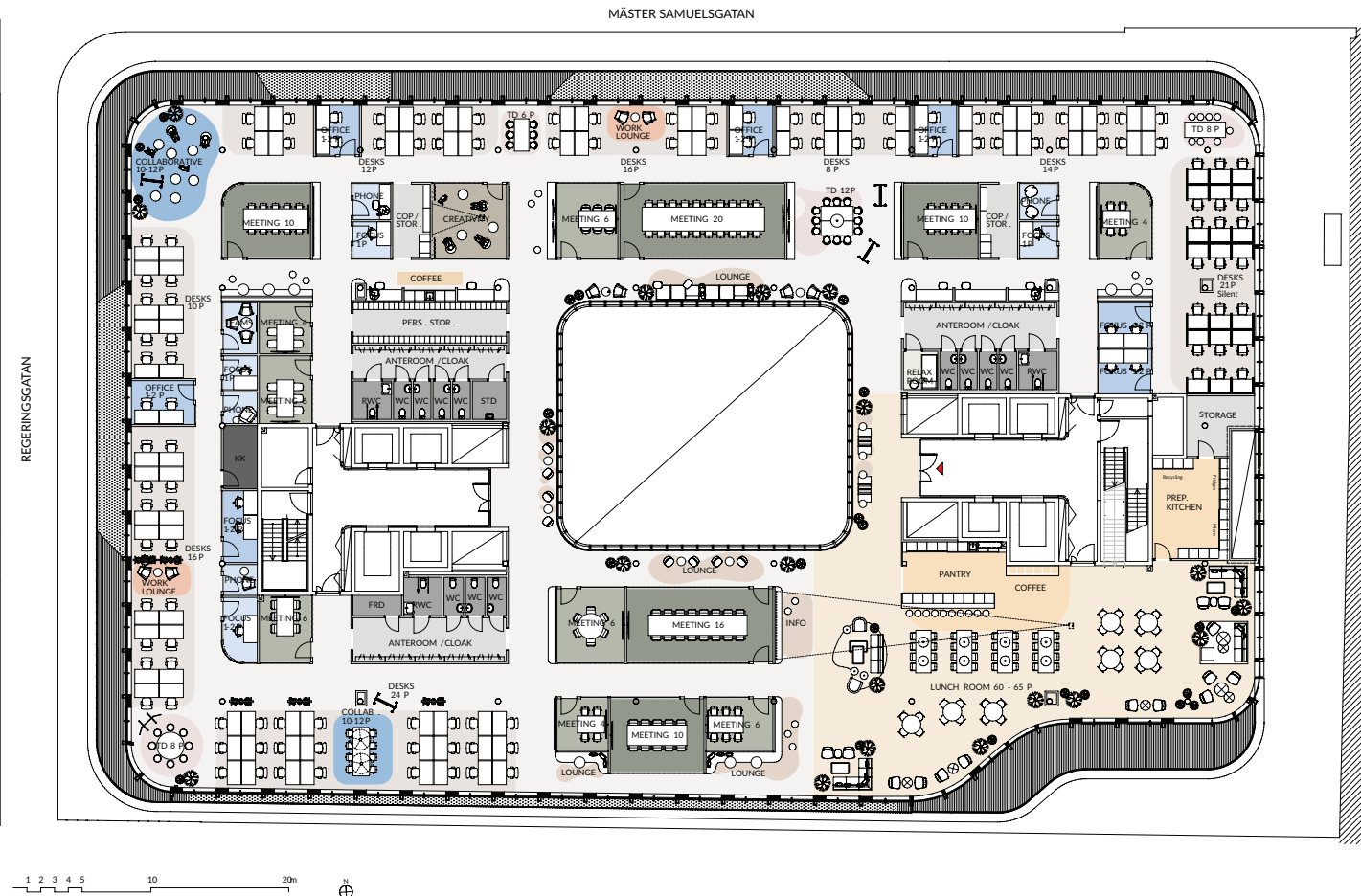


## Suggested work zones - *Floor 9*



# Suggested floor plan - Floor 9

Floor: 9		
Area: Appr. 2 000 sq m		
The office space is dimensioned for a density of 1:10 / sq m		
<b>SUMMARY OF PROGRAM</b>		
Work lounge	2	
Focus room, 1 ppl	4	
Focus room, 2 ppl	7	
Collaborative space	2	
Meeting room, int 8+	5	
Meeting room, int 4-7	8	
Open meeting area 4-7	4	
Creative meeting	1	
Phone/Teams	5	
<b>SEATS &amp; WORKSTATIONS</b>		
Collaborative	18	
Dining room	69	
Focus 1	4	
Focus 2	14	
Open landscape (1400 x 800)	92	
Silent zone (1200 x 800)	21	
Touchdown (open meeting)	34	



# Suggested floor plan - *Floor 9*

Floor: 9		
Area: Appr. 2 000 sq m		
The office space is dimensioned for a density of 1:10 / sq m		
SUMMARY OF PROGRAM		
●	External meeting 10	1
●	External meeting 12	1
●	External meeting 14	1
●	External meeting 16	1
●	External meeting 2	4
●	External meeting 6	6
●	External meeting 8	3
●	Ext. board meeting room 40	1
●	Office	10
●	Meeting room 4	1
●	Meeting room 6	1
●	Creative meeting 1	4
●	Creative meeting 2	4
SEATS & WORKSTATIONS		
☺	Office	10
☺	Dining room	90
☺	Open landscape	26

