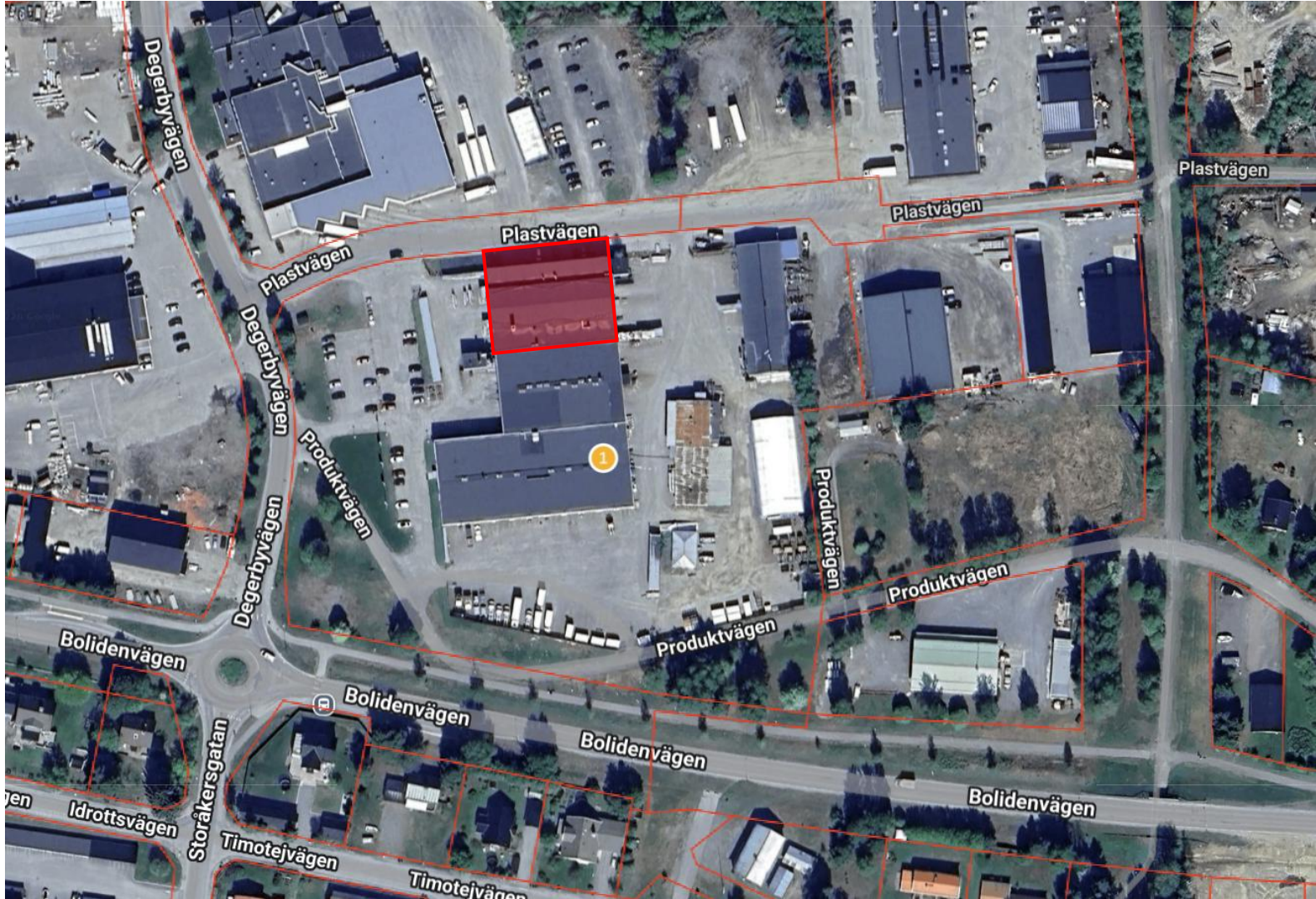


# Röd markering: Hela fastigheten Charkuteriet 3: Plastvägen 3, Skellefteå



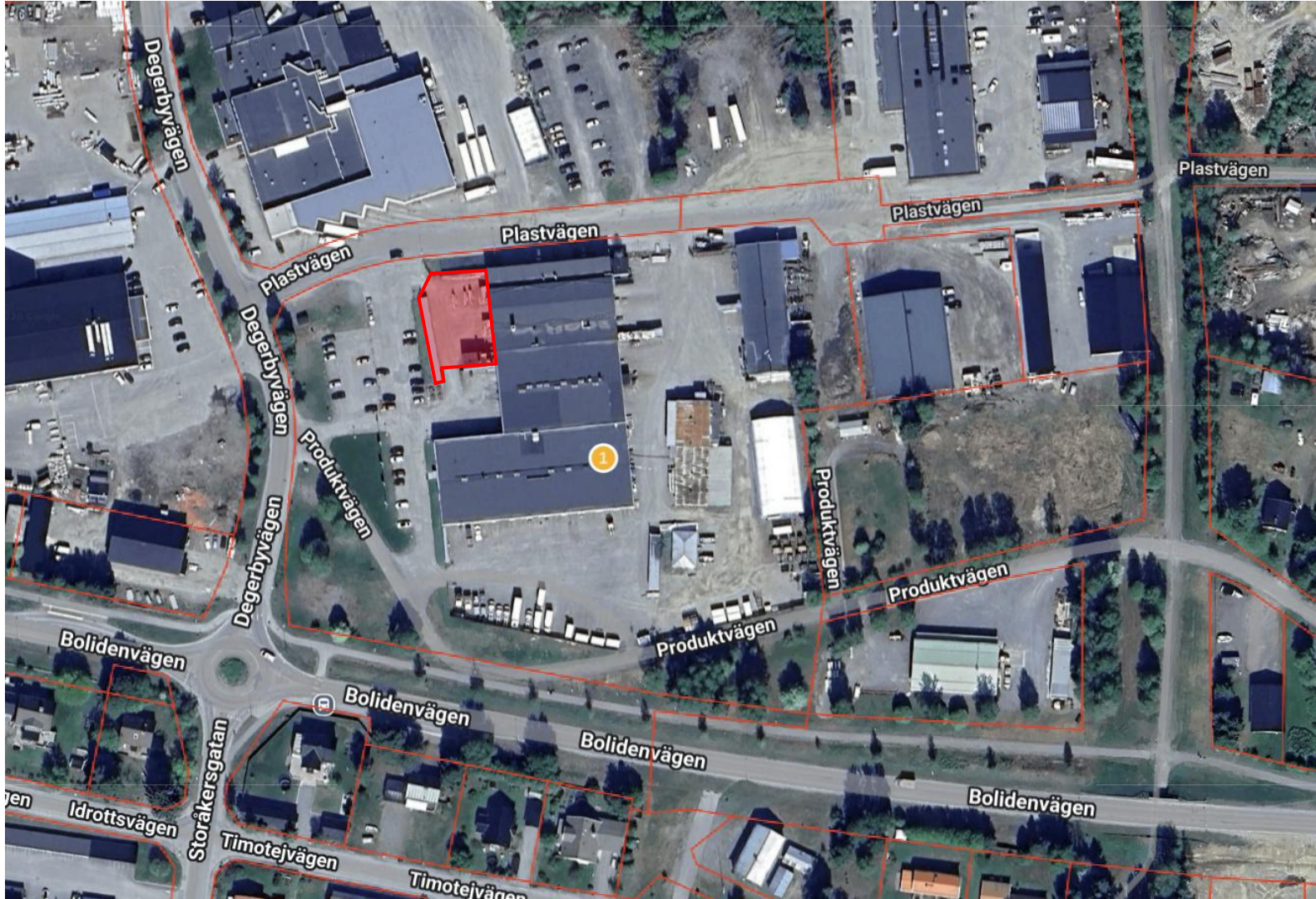
Röd markering: Byggnad om 2 351 kvm som är vakant/tillgänglig, 2 plan



Röd markering: Markytor (baksida) tillgänglig ca 4,600 kvm

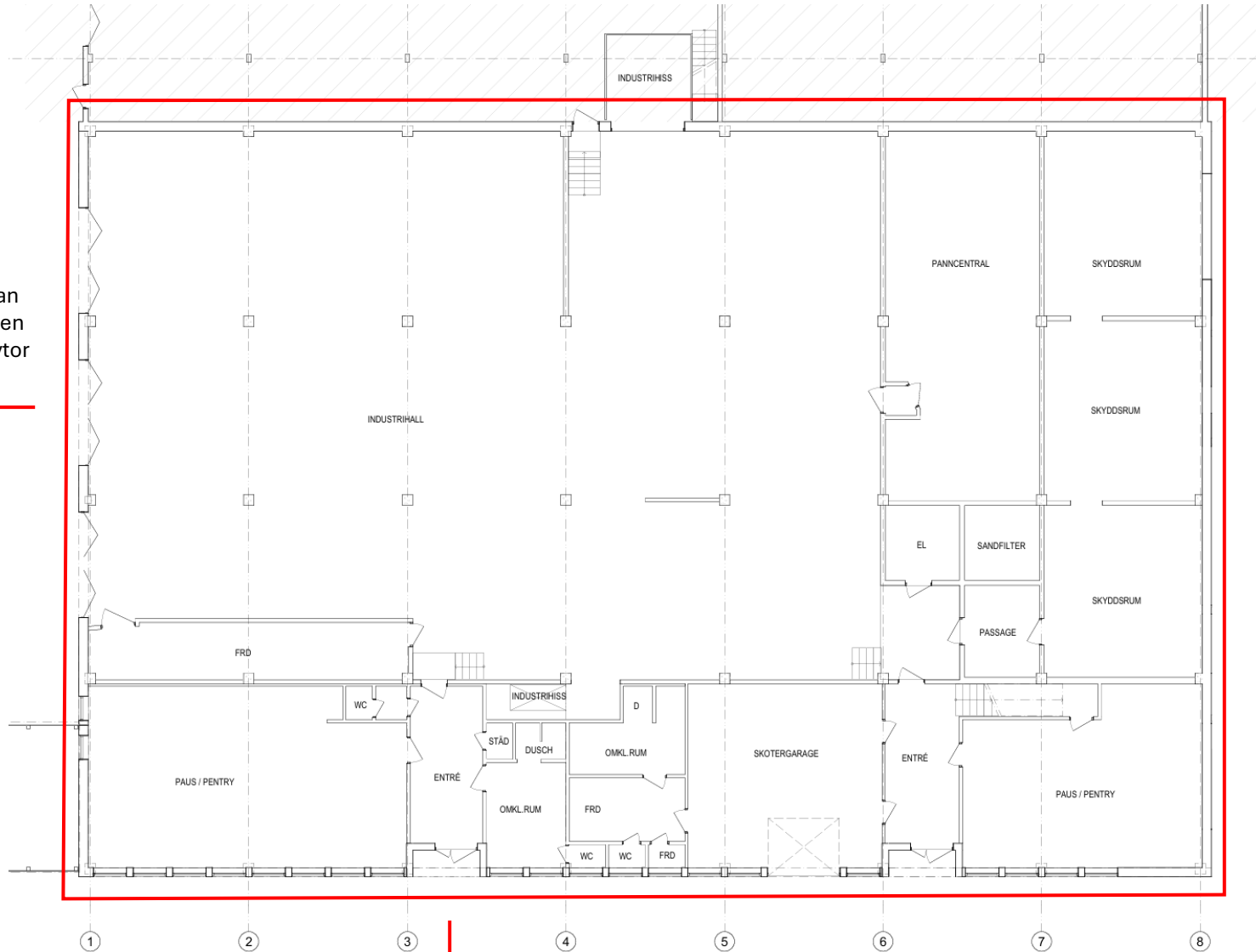


Röd markering: Markytor (framsida) ca 700 kvm



# Plan 1: Vakant lokal 1 156 kvm

Mot baksidan  
av fastigheten  
samt markytör



Plan 1  
1:100

Mot Plastvägen

SKALA 1:100



# Plan 1: Personal ytor ca 278 kvm



Plan 1  
1:100

SKALA 1:100



# Plan 1: Industrihall ca 630 kvm



Plan 1  
1:100

SKALA 1:100



# Plan 1: Lager & övrigt ca 248 kvm

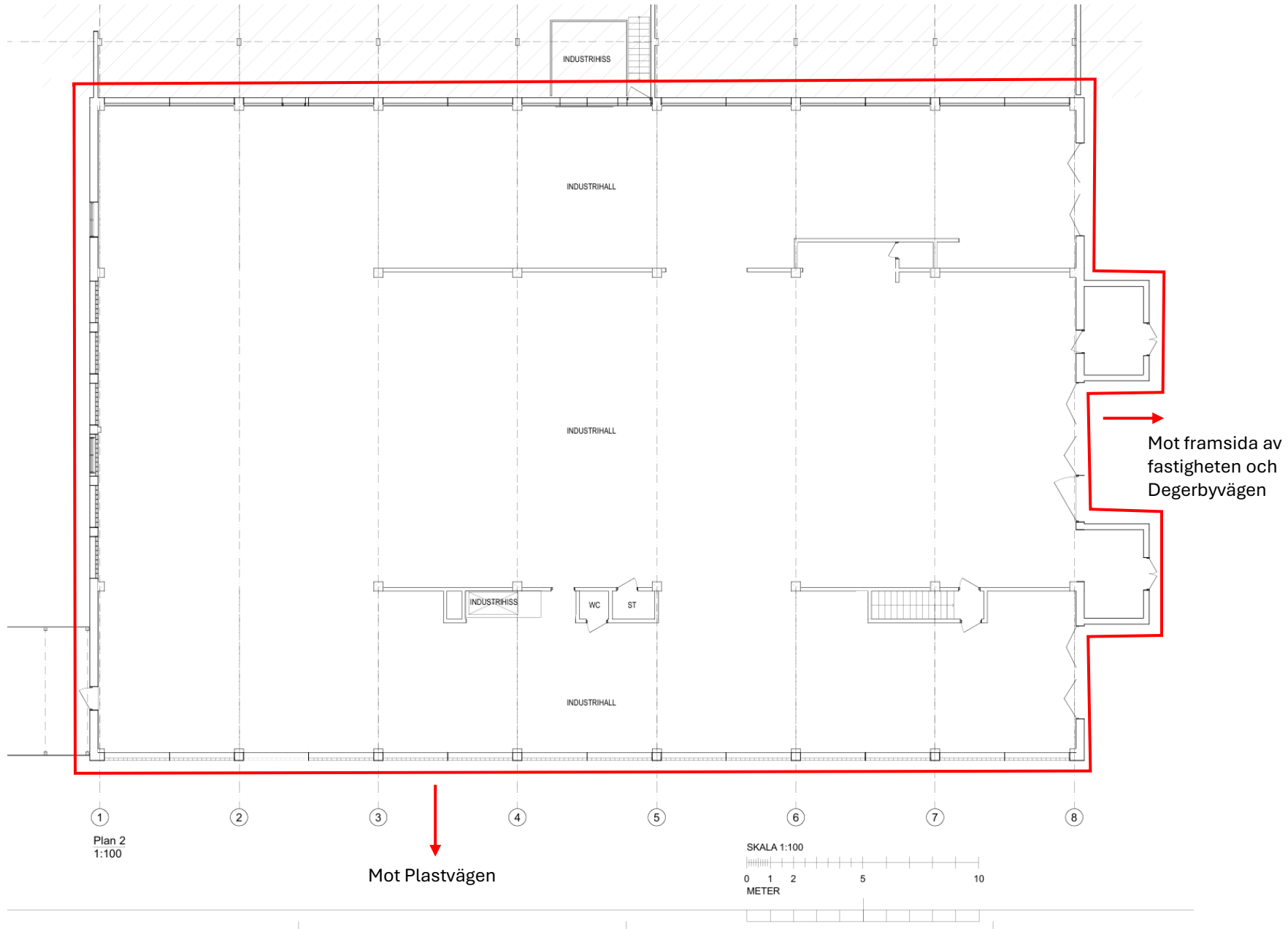


Plan 1  
1:100

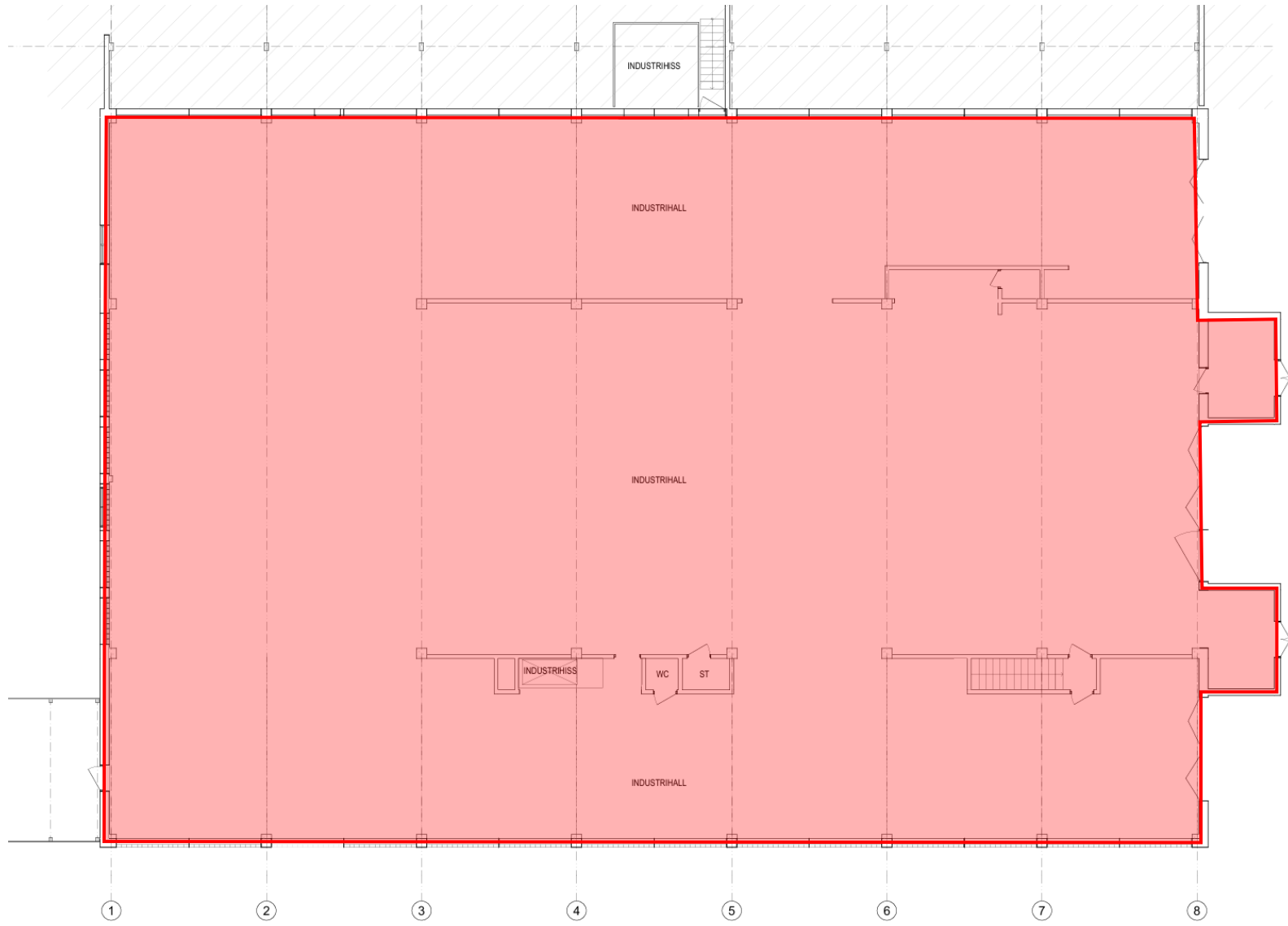
SKALA 1:100



# Plan 2: Vakant lokal 1 195 kvm



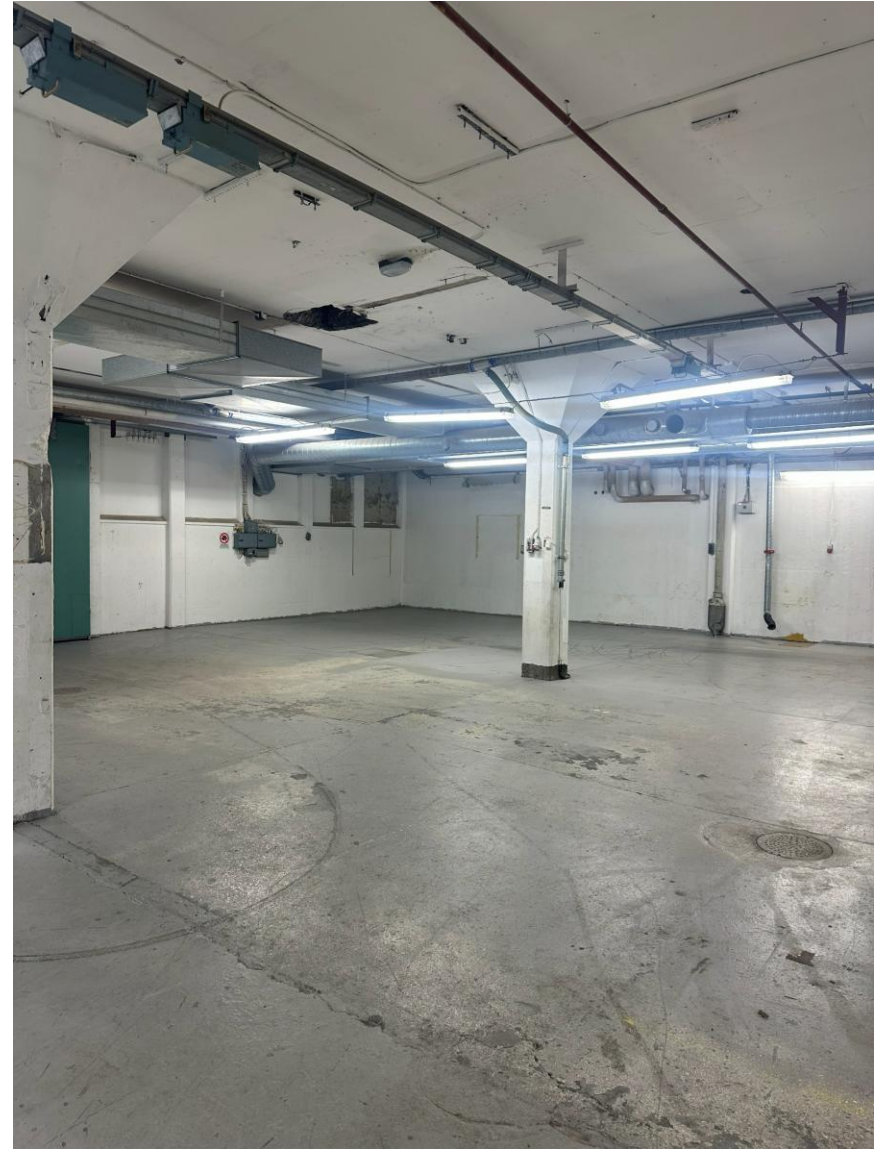
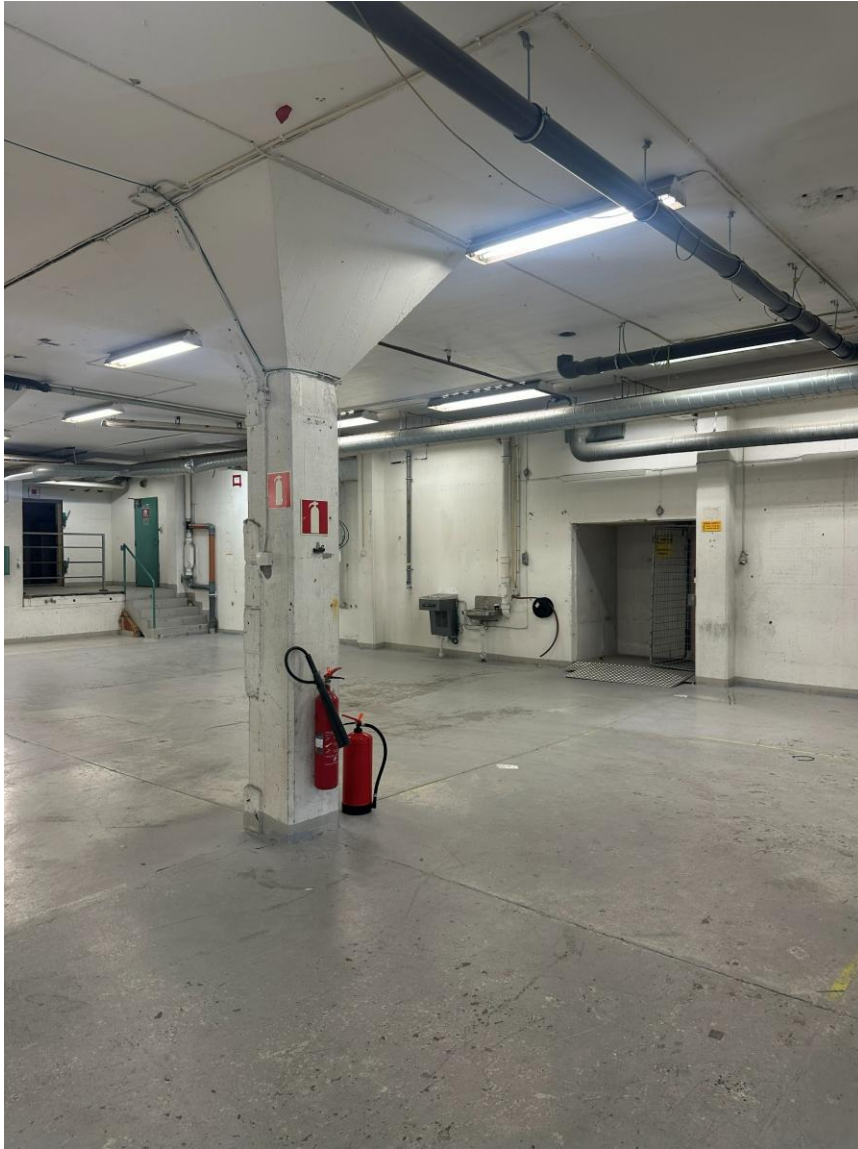
# Plan 2: Industrihall 1 195 kvm



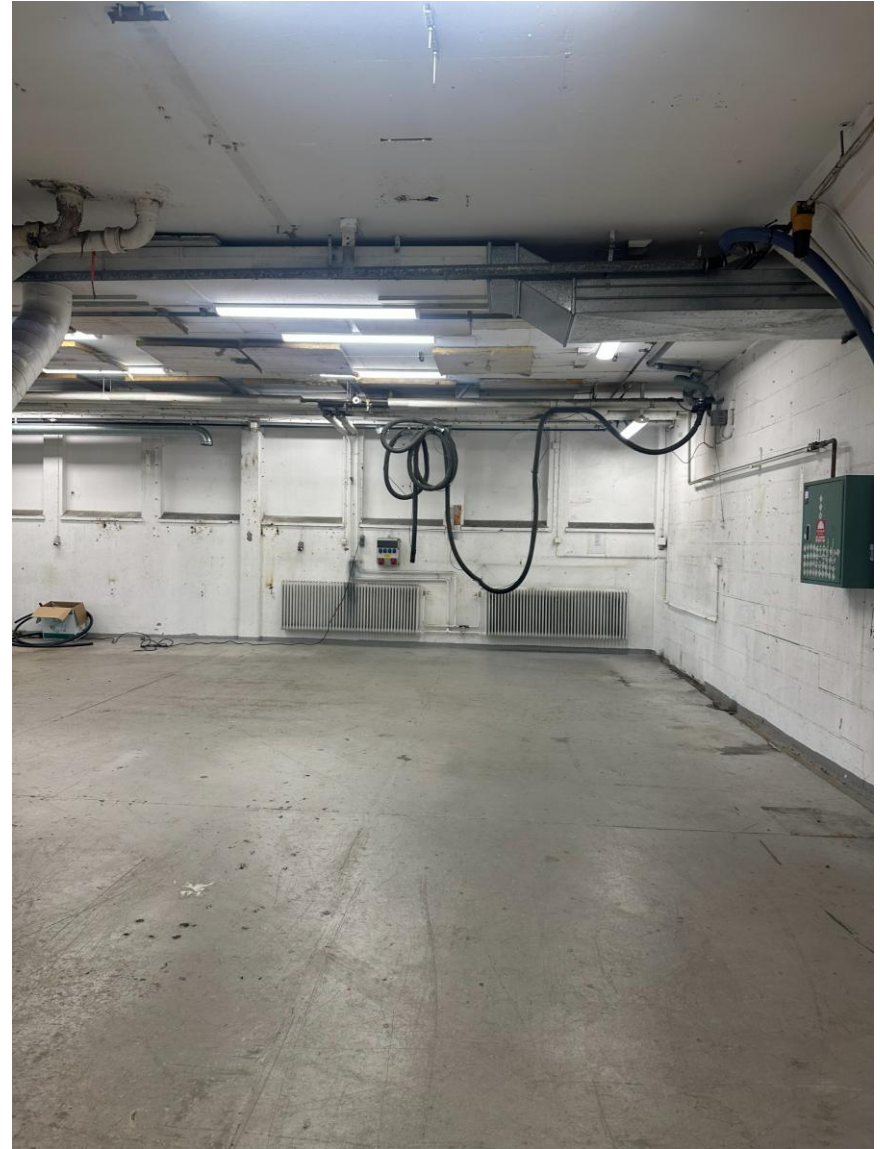
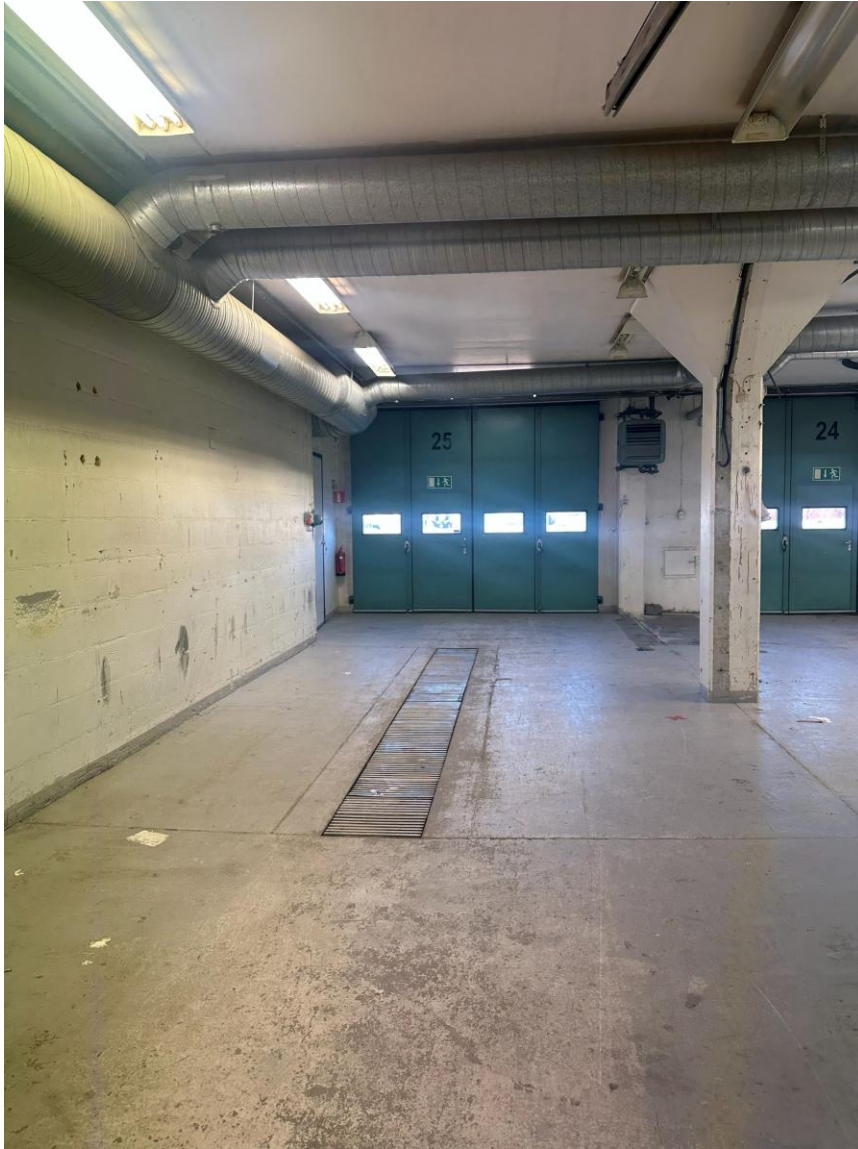
Plan 2  
1:100



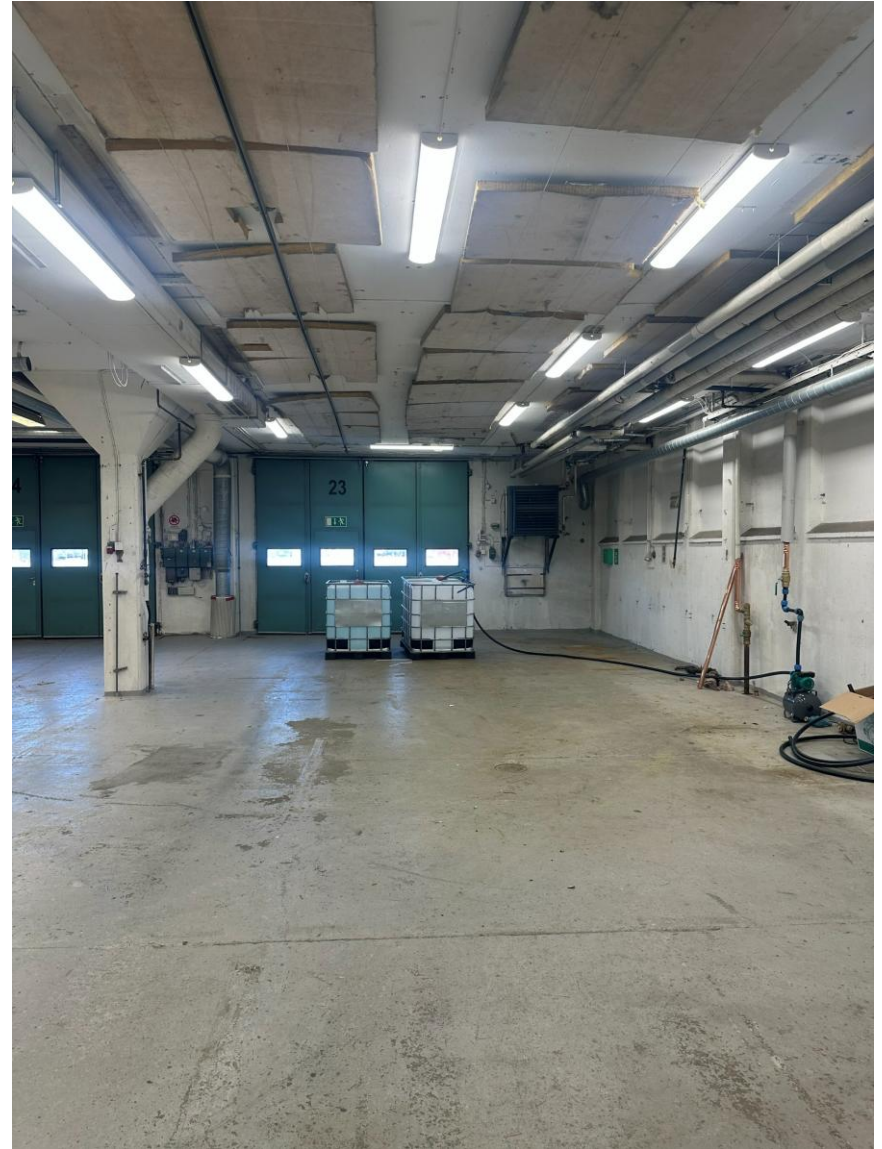
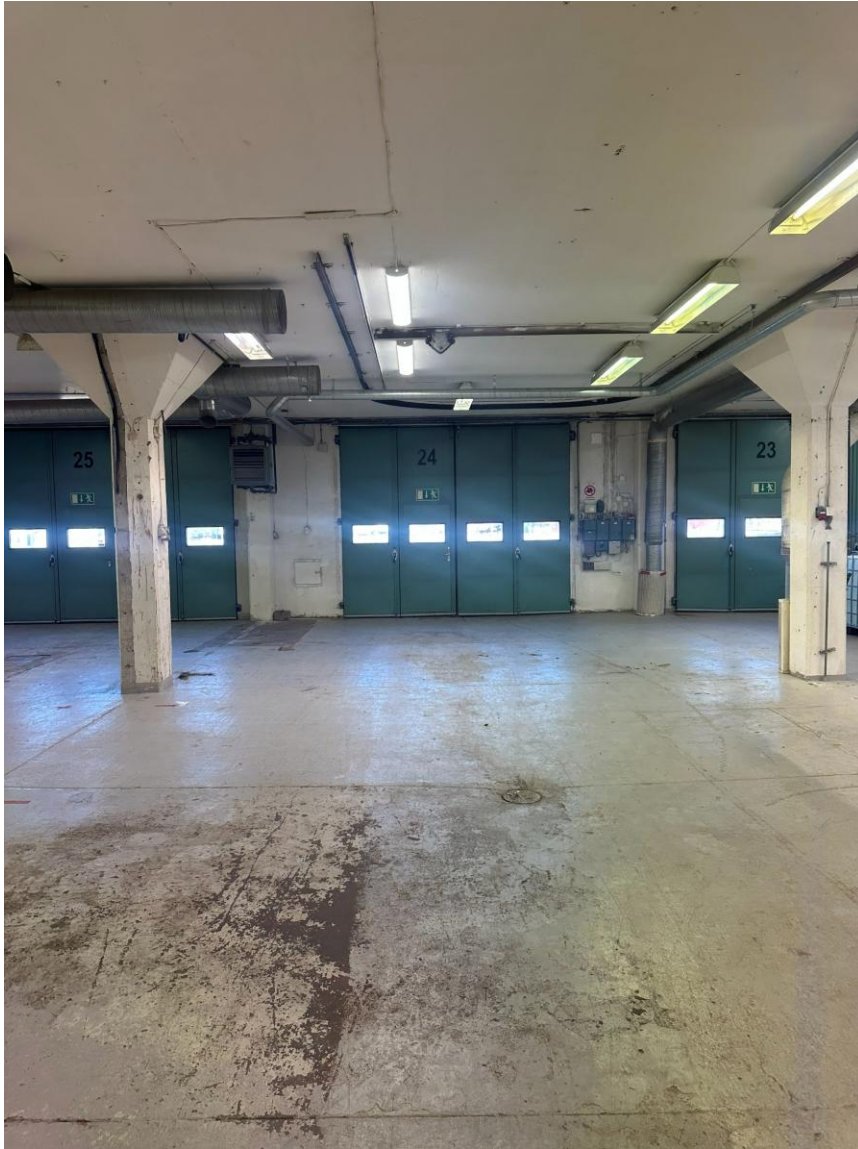
# Plan 1: Bilder, Industriehall (1/3)



# Plan 1: Bilder, Industriehall (2/3)



# Plan 1: Bilder, Industriehall (3/3)



# Plan 1: Bilder, Personal ytor (1/2)



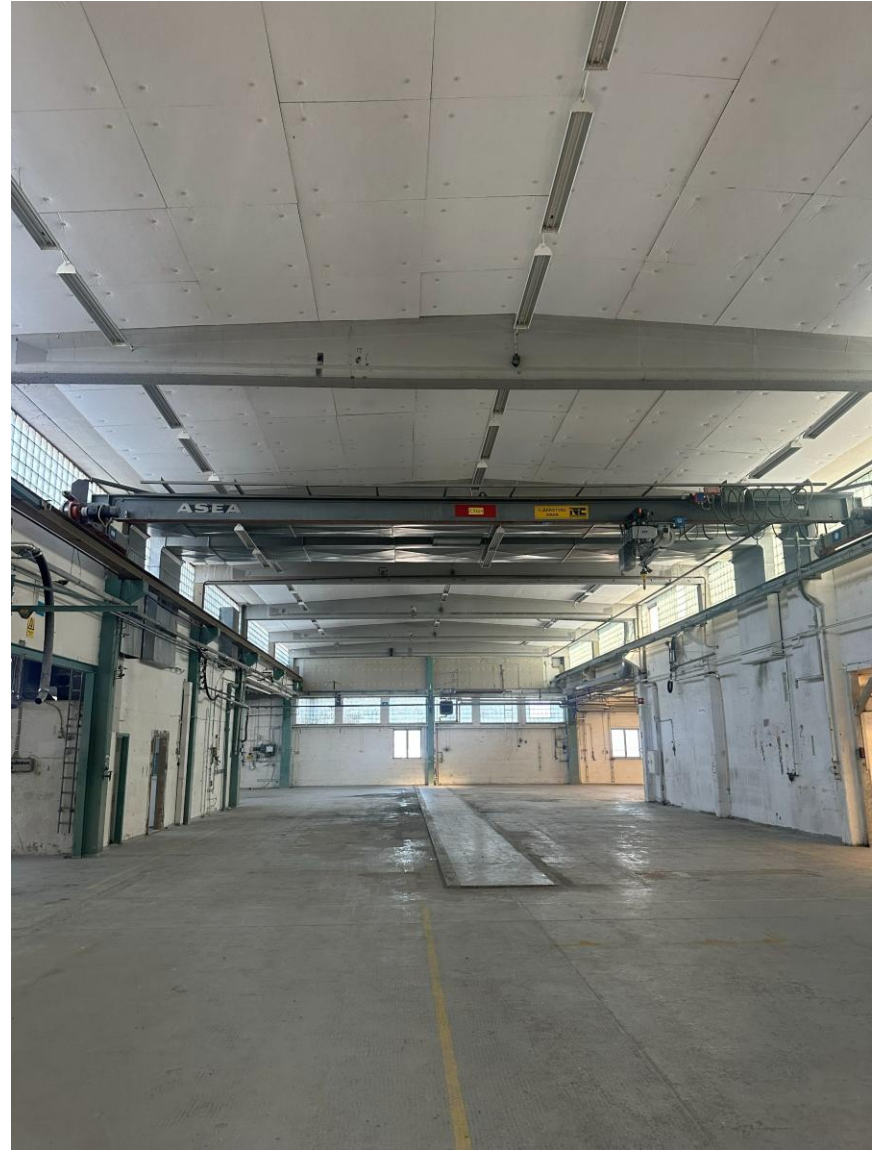
## Plan 1: Bilder, Personal ytor (2/2)



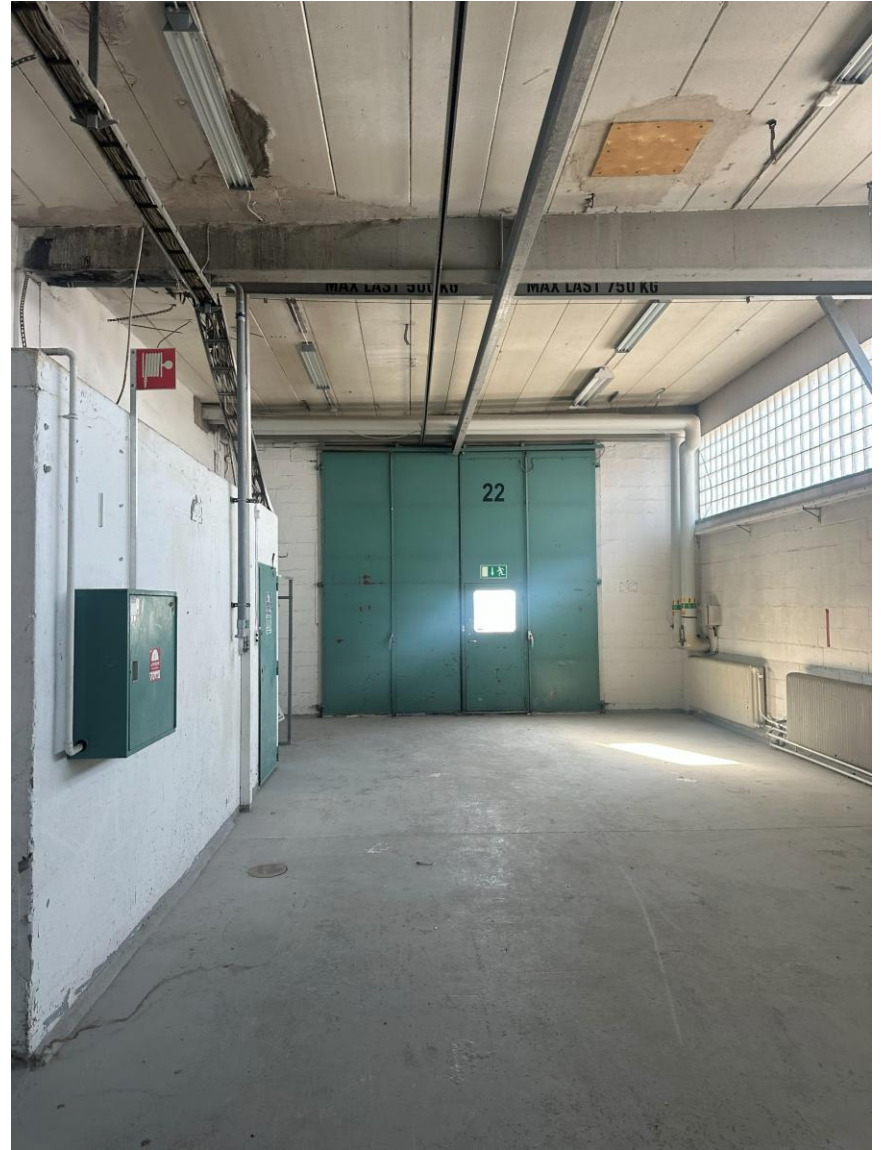
# Plan 1: Utvändigt, 3 st portar till lokal (Baksida fastighet)



## Plan 2: Bilder, Industriehall (1/4)



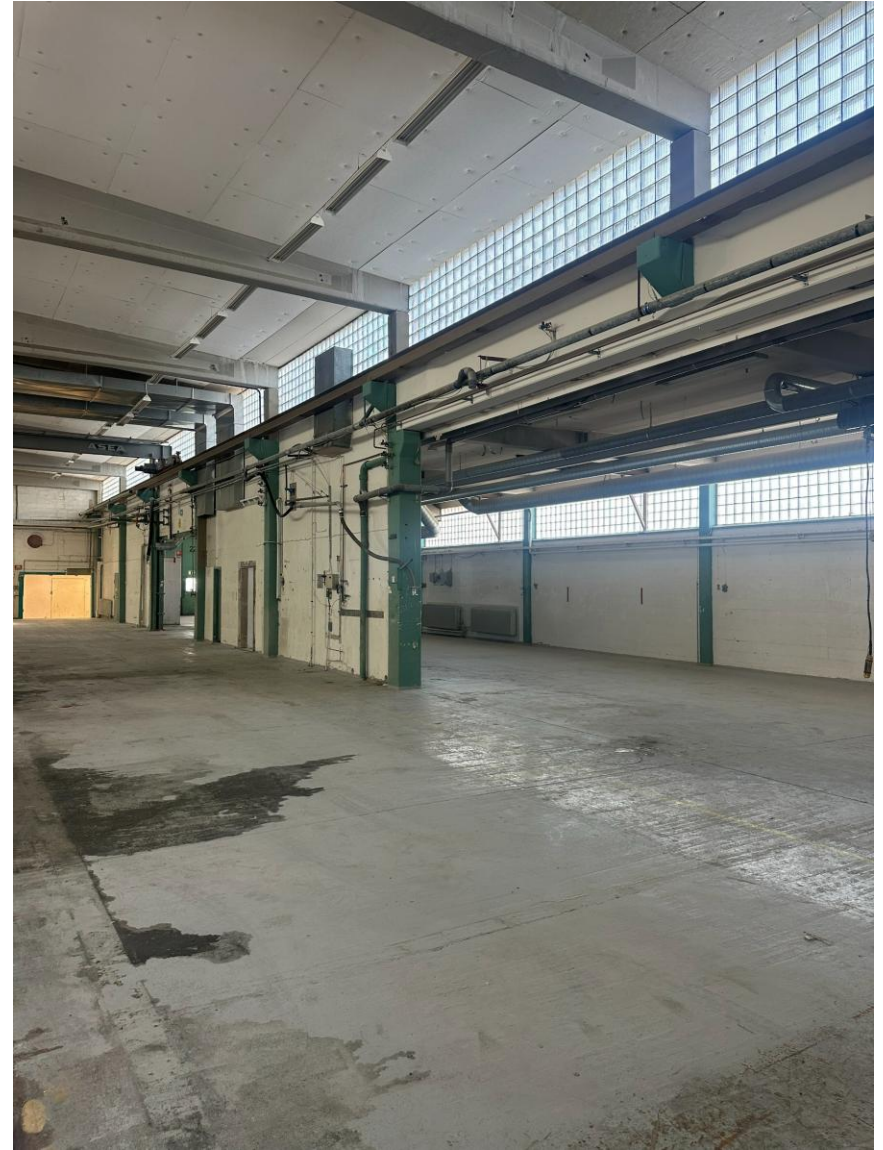
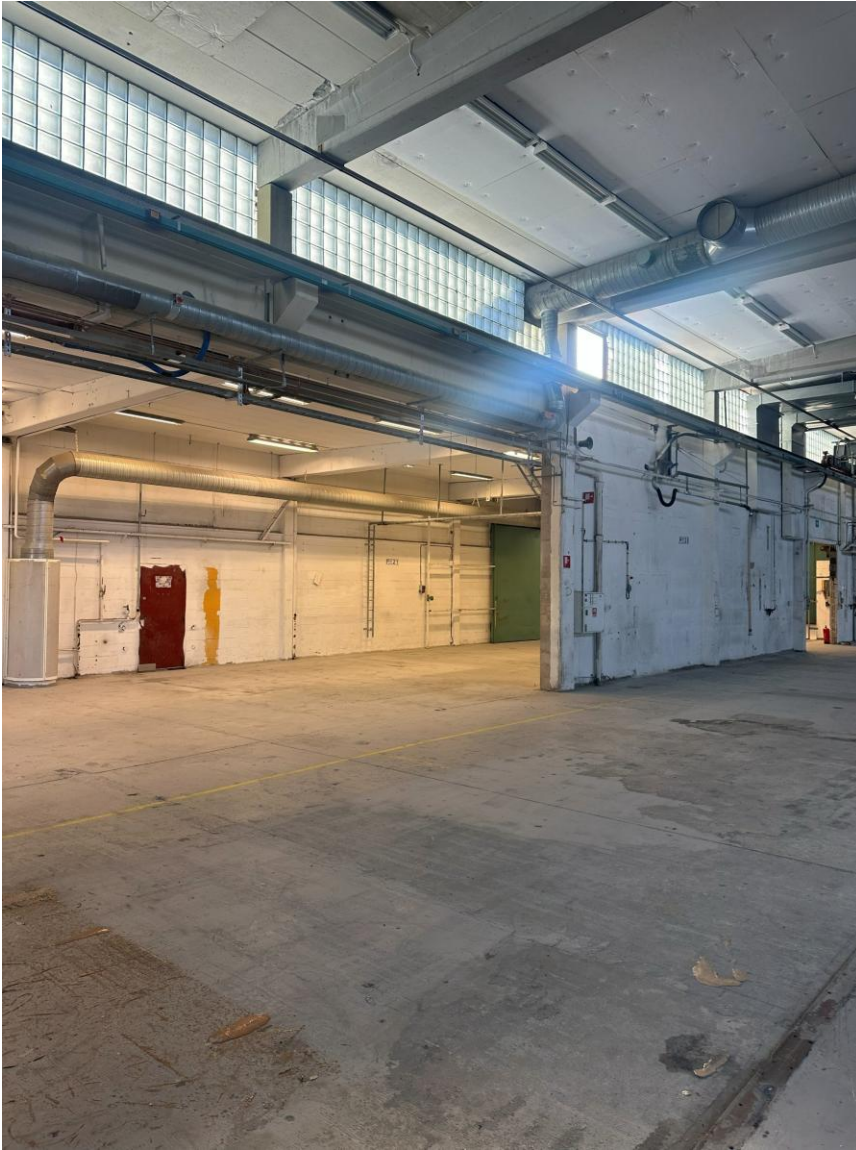
# Plan 2: Bilder, Industriehall (2/4)



## Plan 2: Bilder, Industriehall (3/4)



## Plan 2: Bilder, Industriehall (4/4)



## Plan 2: Utvändigt, portar till lokal (1/3)



## Plan 2: Utvändigt, portar till lokal (2/3)



## Plan 2: Utvändigt, portar till lokal (3/3)

