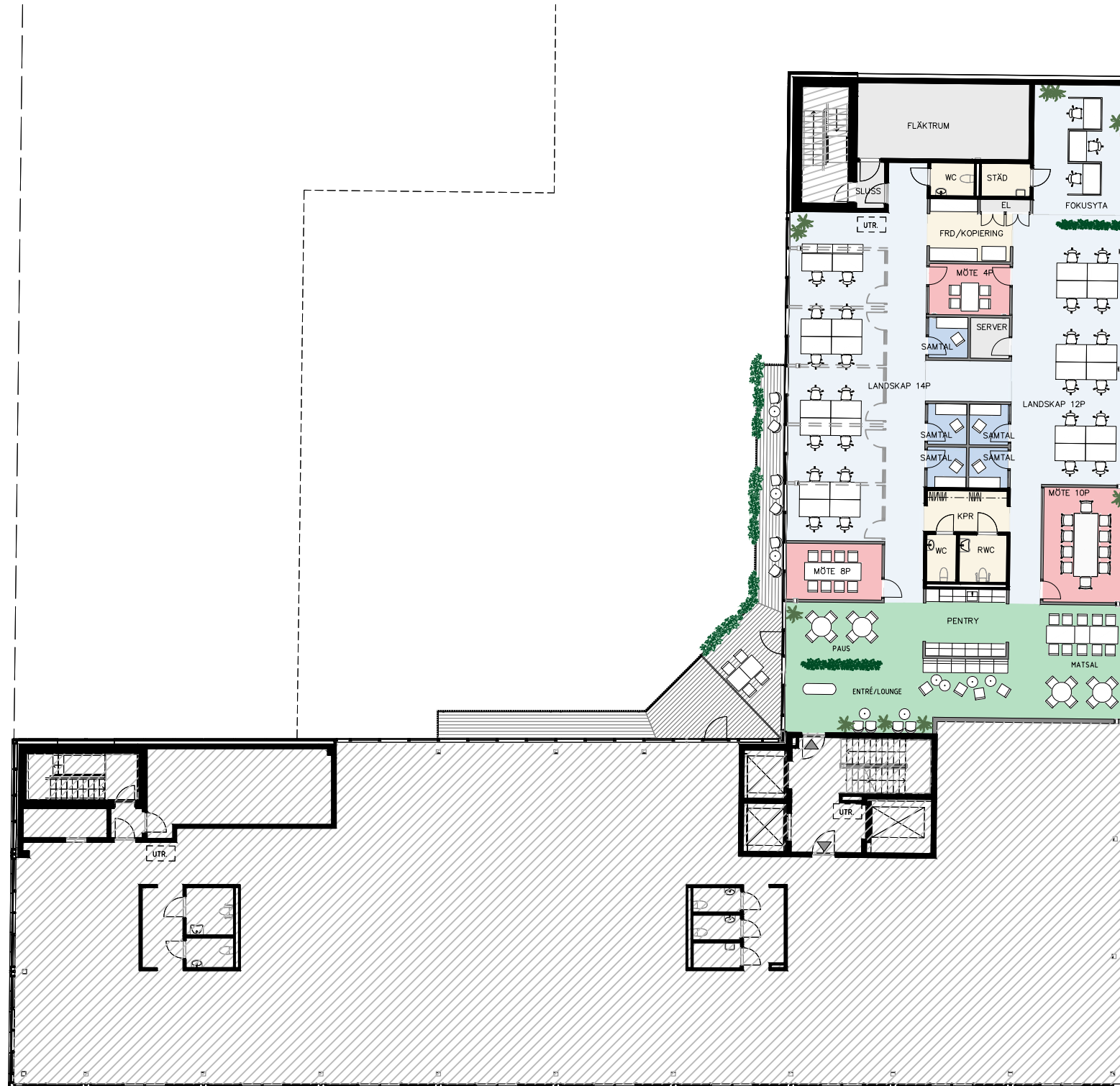


# HG-SKISS

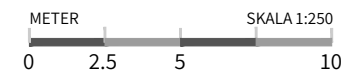
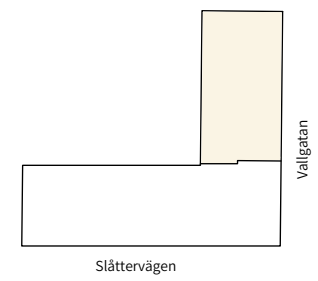
## UTHYRNING PLAN 6 HUSDEL 2

LOA: ca 445 kvm  
(enligt Masterplan daterad 2022-06-21)

- Landskap/kommunikation
- Kontor
- Samtal
- Möte
- Lounge
- Teknik
- Rwc, Wc, Städ  
Kpr, Frd, Kop.



Plan 10
Plan 09
Plan 08
Plan 07
Plan 06
Plan 05
Plan 04
Plan 03
Plan 02 - entréplan
Plan 01 - källare - förråd



A1778-001-PLAN 6B  
DATUM: 2024-04-26

