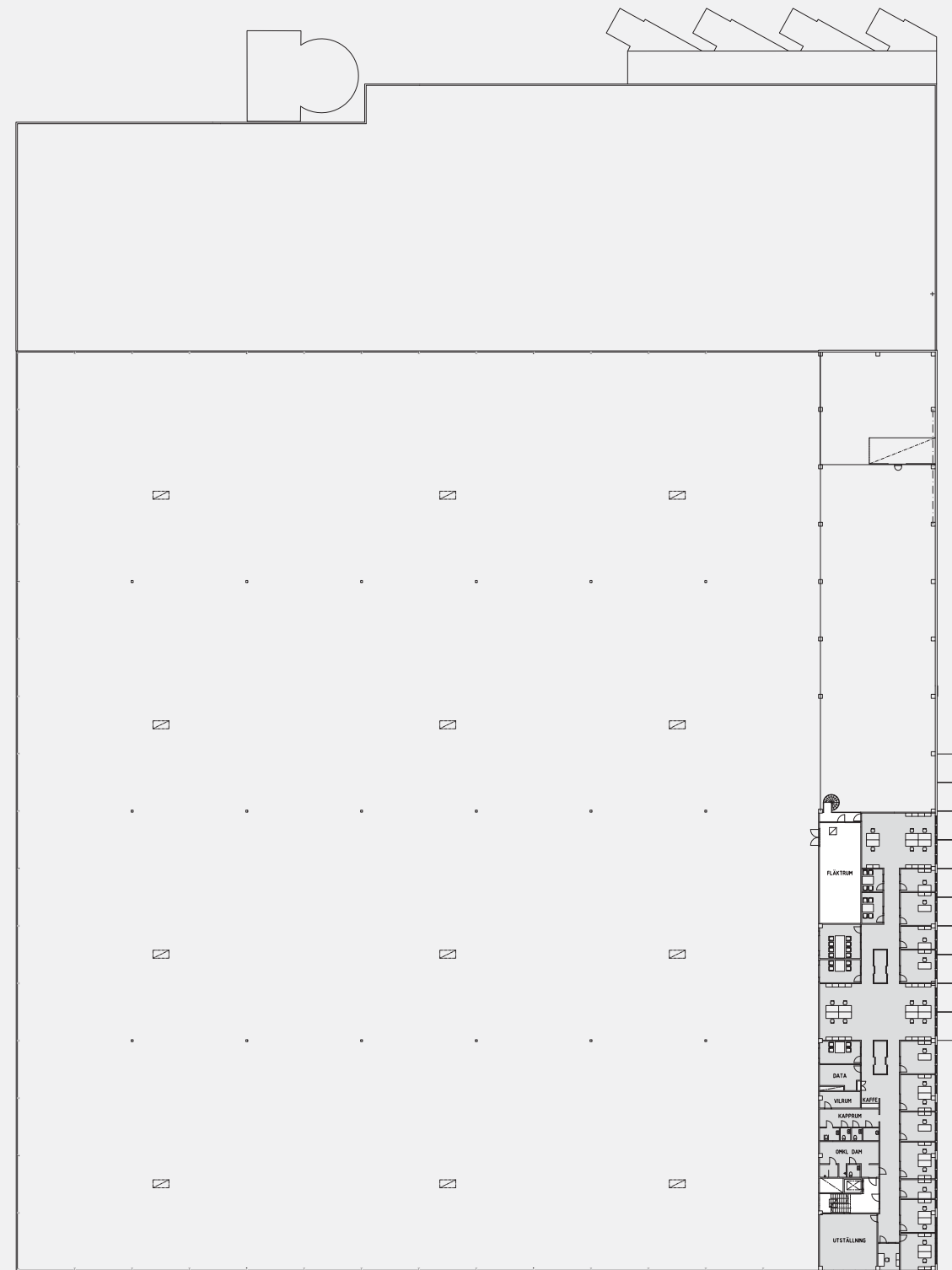


Plan 1

- Höglager ca 15.980 kvm
- Produktion/låglager/truckladdning ca 1.013 kvm
- Trapphus/teknik ca 100 kvm

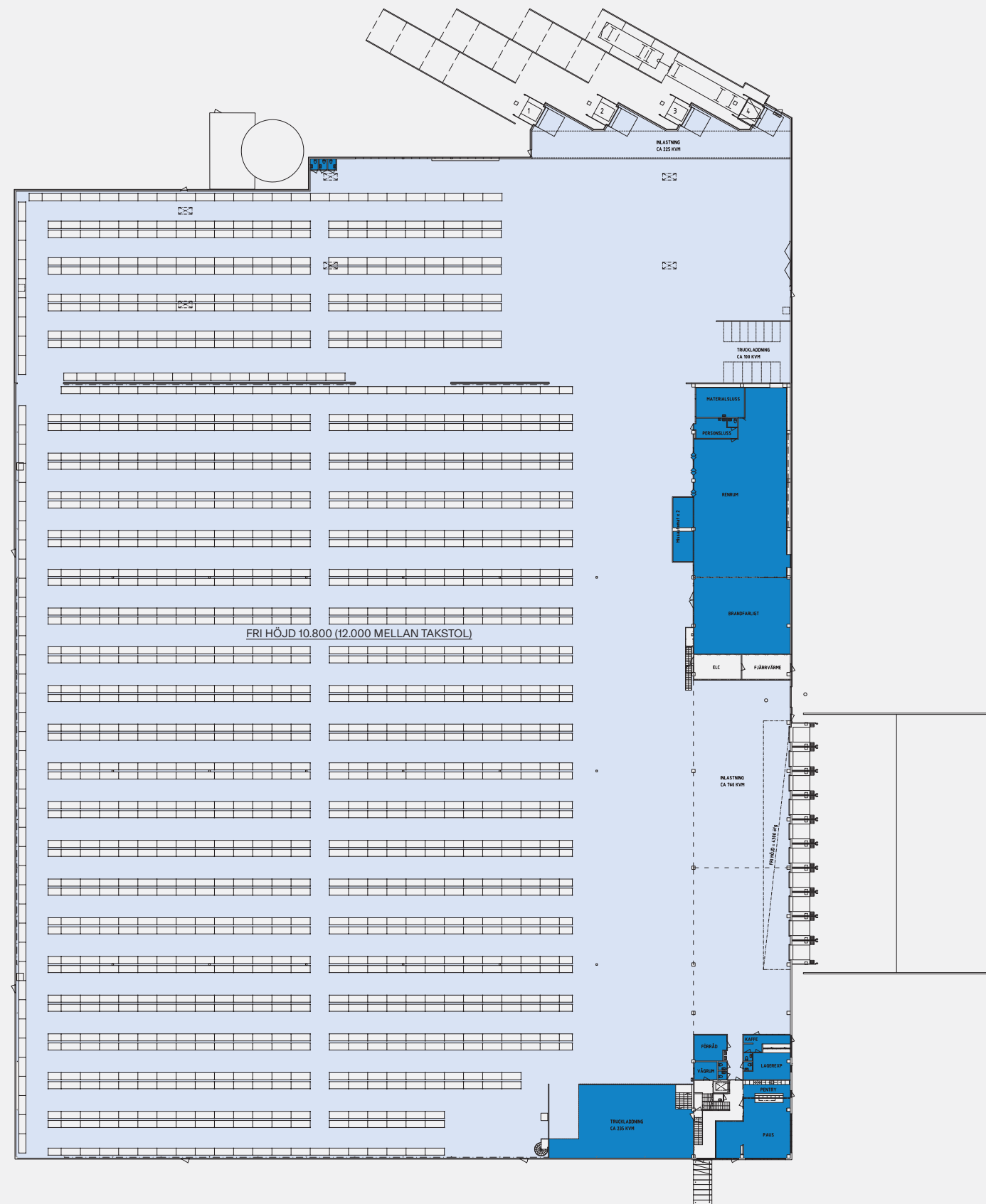




Plan 3

- Kontor/personal ca 725 kvm
- Trapphus/teknik ca 91 kvm





Plan 1

● Kontor/personal	- kvm
● Höglager	15.980 kvm
● Produktion/låglager/truckladdning	1.013 kvm
● Trapphus/teknik	100 kvm

