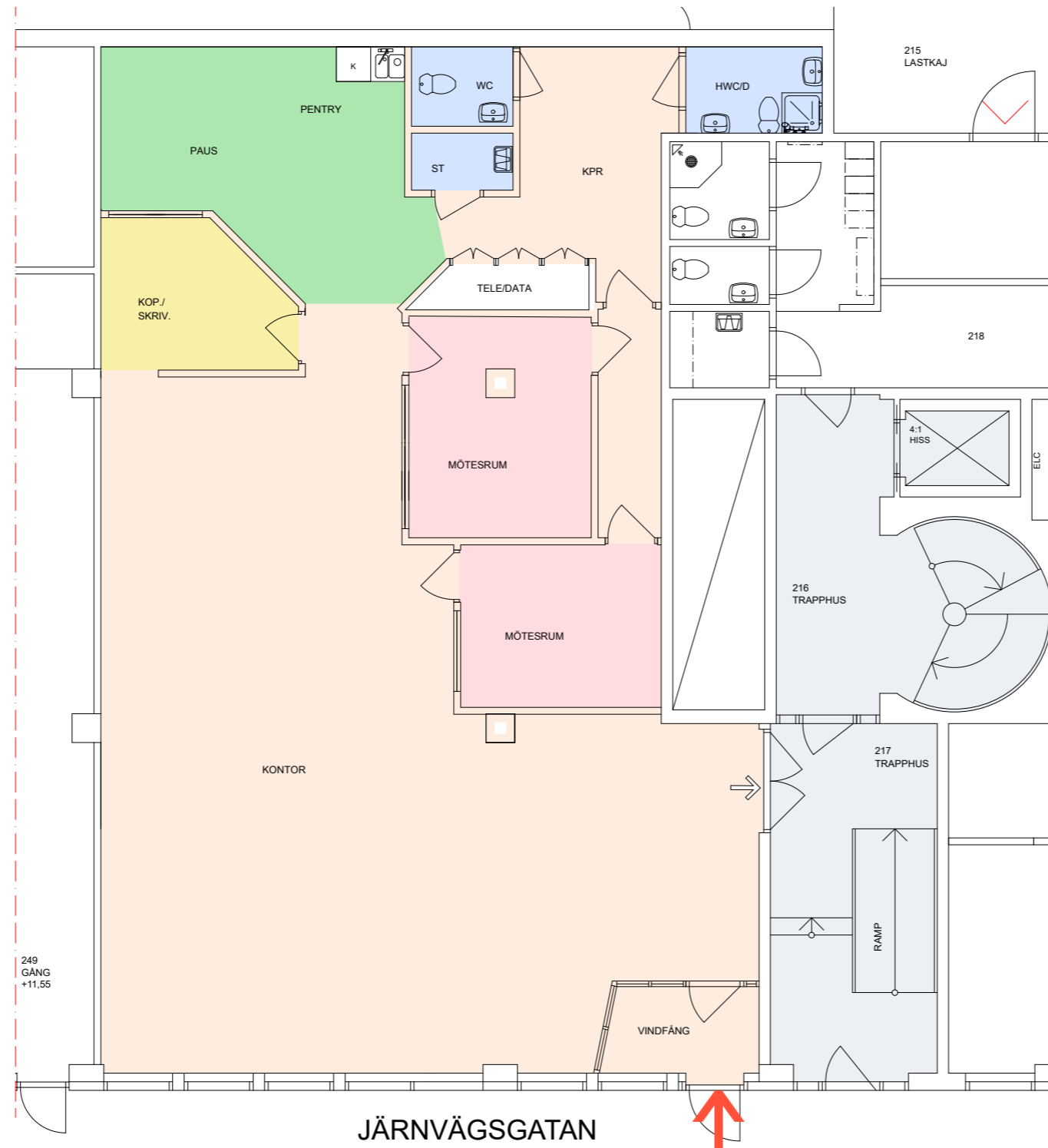


# Kontorslokal

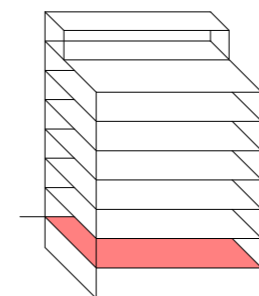
## Järnvägsgatan 2 Sundbyberg, ca 189 kvm, Plan 2 (entréplan)



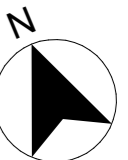
Totalyta Ca 189 m<sup>2</sup>  
Våningsplan: 2  
Antal mötesrum: 2

- |  |               |  |                   |
|--|---------------|--|-------------------|
|  | Kontorsyta    |  | Skrivarrum/förråd |
|  | Mötesrum      |  | Pentry/paus       |
|  | Samtalsrum    |  | WC                |
|  | Hiss/trapphus |  | Teknik/schakt     |

- Utrymning  
 Entré

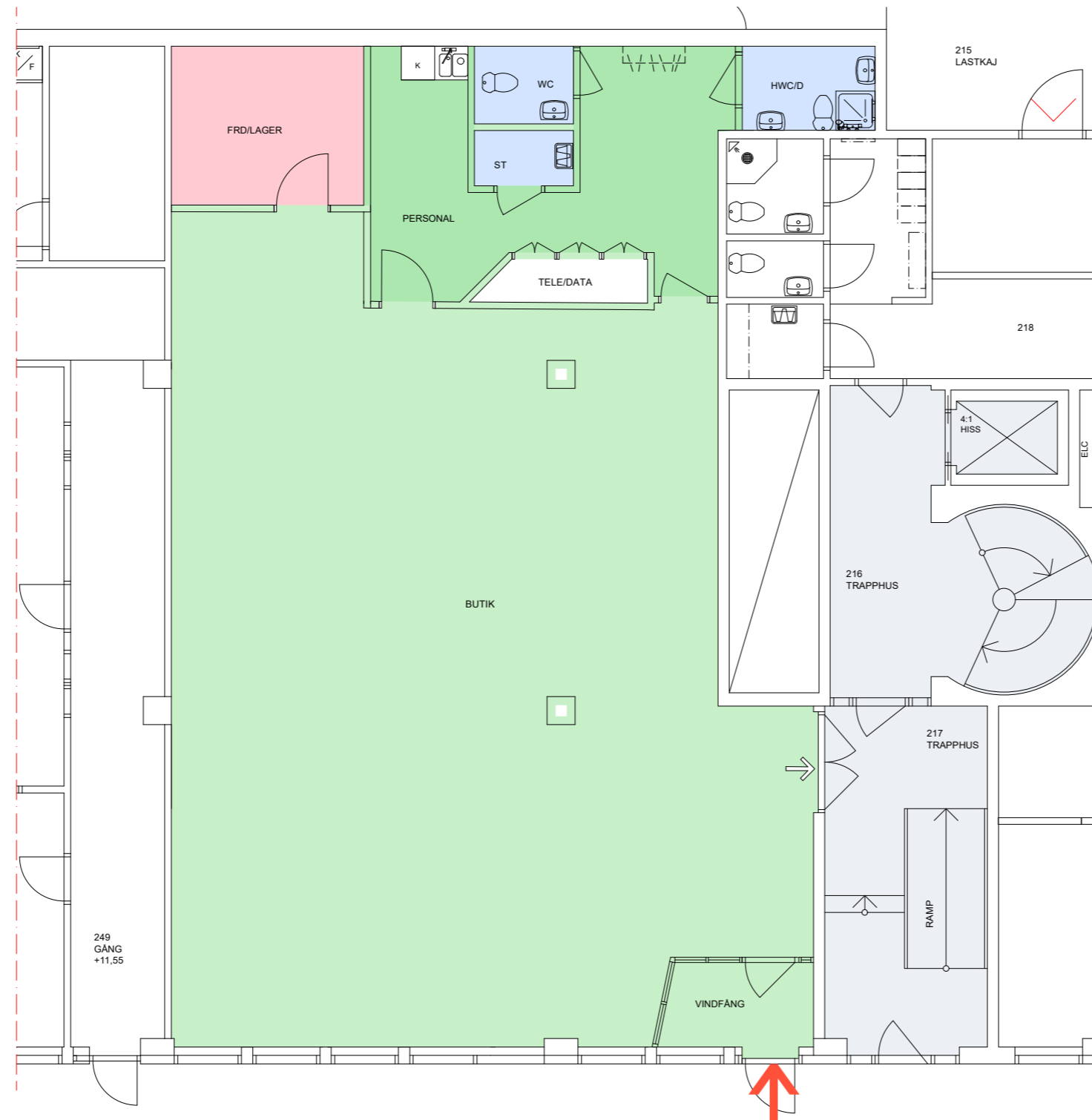


SKALA 1:100



# Butiksslokal

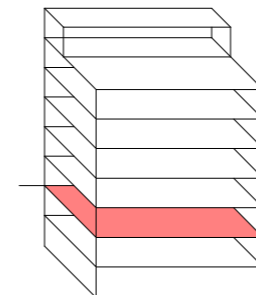
## Järnvägsgatan 2 Sundbyberg, ca 189 kvm, Plan 2 (entréplan)



Totalyta Ca 198 m<sup>2</sup>  
Våningsplan: 2  
Butiksyta: 145m<sup>2</sup>

- |  |               |  |               |
|--|---------------|--|---------------|
|  | Butiksyta     |  | Personalyta   |
|  | Lageryta      |  | WC            |
|  | Hiss/trapphus |  | Teknik/schakt |

- Utrymning  
 Entré



SKALA 1:100

