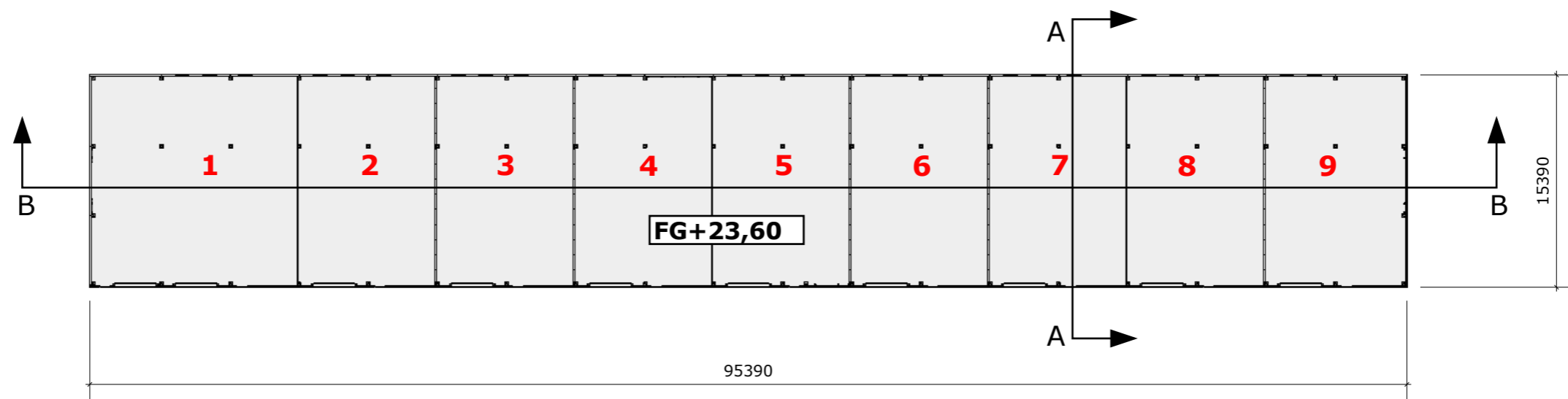
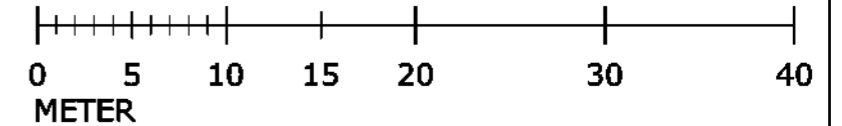


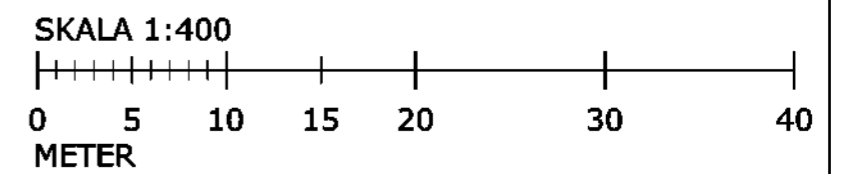
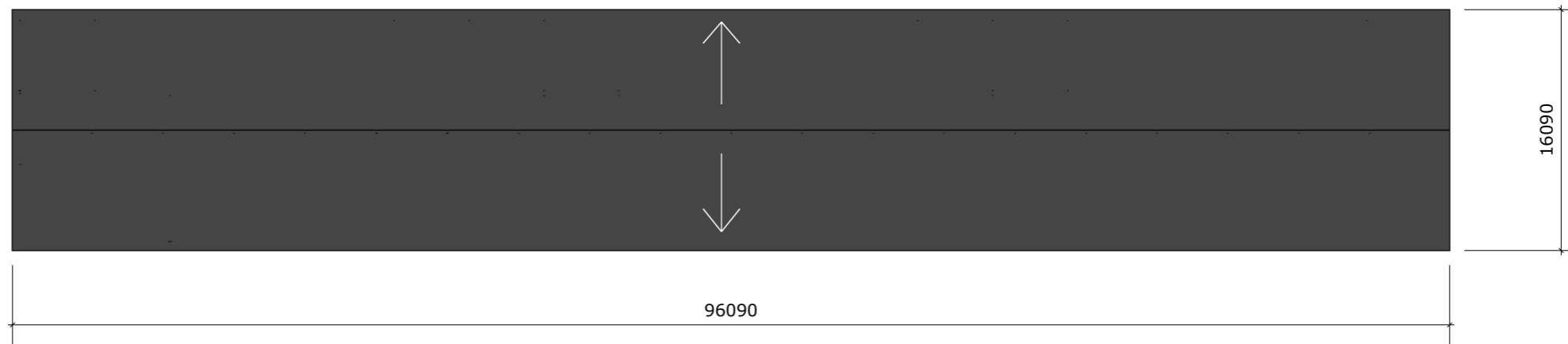
## Invärdig yta per lokal

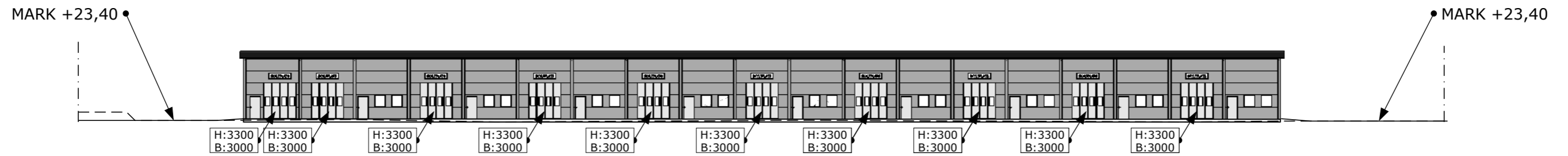
Lokal 1: 225 m<sup>2</sup>  
Lokal 2: 150 m<sup>2</sup>  
Lokal 3: 150 m<sup>2</sup>  
Lokal 4: 150 m<sup>2</sup>  
Lokal 5: 150 m<sup>2</sup>  
Lokal 6: 150 m<sup>2</sup>  
Lokal 7: 150 m<sup>2</sup>  
Lokal 8: 150 m<sup>2</sup>  
Lokal 9: 150 m<sup>2</sup>



SKALA 1:400



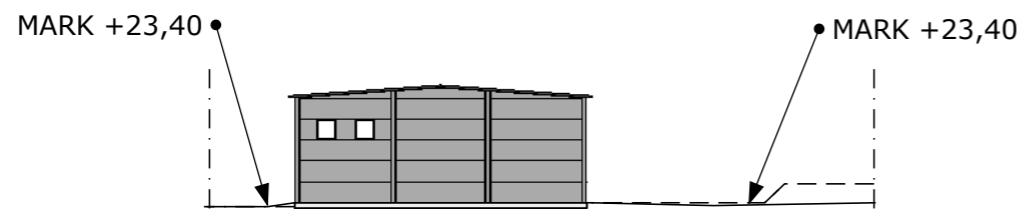




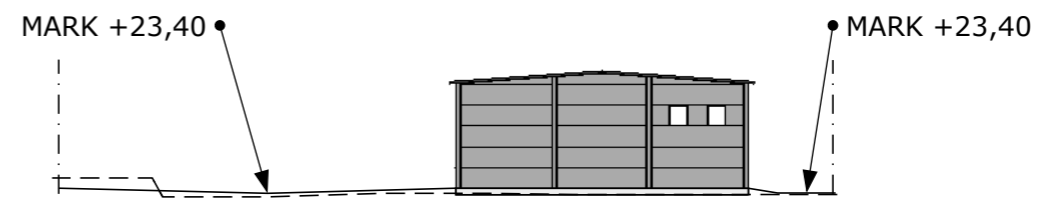
**SÖDER**



**NORR**

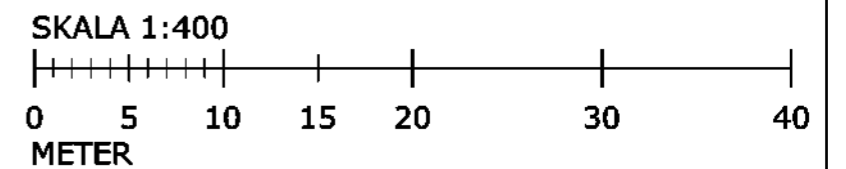


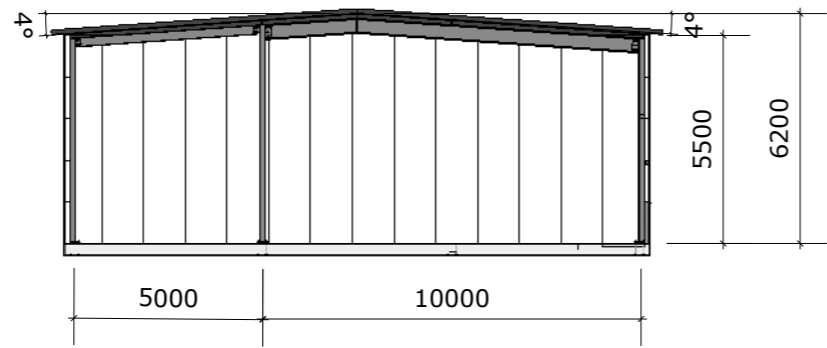
**VÄST**



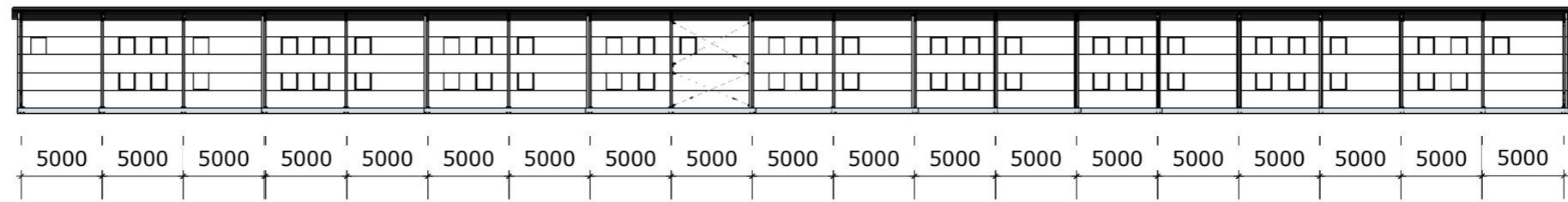
**ÖST**

- FASTIGHETSGRÄNS
- BEFINTLIG MARKNIVÅ ENLIGT NYBYGGNADSKARTA
- JUSTERAD MARKNIVÅ





**A-A (1:200)**



**B-B (1:400)**

